



## Datasheet for ABIN7073042 anti-Abeta 1-40 antibody



[Go to Product page](#)

3 Images

1 Publication

### Overview

Quantity:	100 µL
Target:	Abeta 1-40
Reactivity:	Rat, Mouse
Host:	Rabbit
Clonality:	Polyclonal
Conjugate:	This Abeta 1-40 antibody is un-conjugated
Application:	Immunohistochemistry (IHC), Immunofluorescence (IF)

### Product Details

Immunogen:	KLH conjugated Synthetic peptide corresponding to Mouse Abeta40
Cross-Reactivity:	Rat
Purification:	Affinity purification

### Target Details

Target:	Abeta 1-40
Alternative Name:	Amyloid beta 40 ( <a href="#">Abeta 1-40 Products</a> )
Background:	Most of autosomal dominant familial AD can be attributed to mutations in one of three genes: those encoding amyloid precursor protein (APP) and presenilins 1 and 2. Most mutations in the APP and presenilin genes increase the production of a small protein called Aβ42, which is the main component of senile plaques. Some of the mutations merely alter the ratio between Aβ42 and the other major forms-particularly Aβ40-without increasing Aβ42 levels.

## Target Details

---

Gene ID: 11820

NCBI Accession: [NP\\_001185752](#)

UniProt: [P12023](#)

## Application Details

---

Application Notes: IHC/IF (M,R) 1:400-1:1000

Restrictions: For Research Use only

## Handling

---

Format: Liquid

Buffer: PBS, pH 7.4, 0.02 % sodium azide

Preservative: Sodium azide

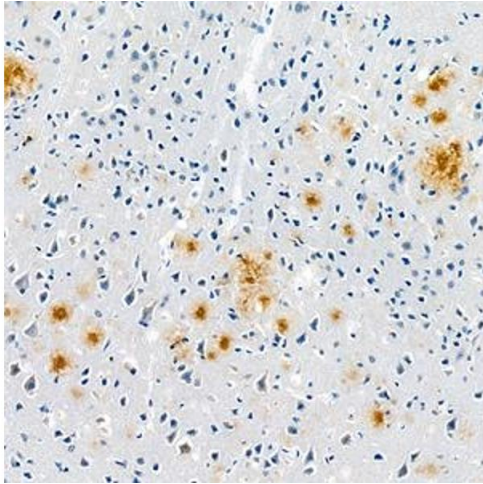
Precaution of Use: This product contains Sodium azide: a POISONOUS AND HAZARDOUS SUBSTANCE which should be handled by trained staff only.

Storage: -20 °C

## Publications

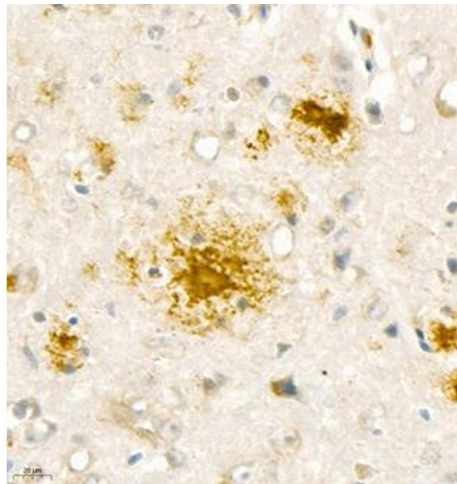
---

Product cited in: Liu, Ren, Yuan, Zhang, Guo, Guan, Moeckel, Ahuja, Fu: "Postoperative Onset and Detection of SARS-CoV-2 in Surgically Resected Specimens From Gastrointestinal Cancer Patients With Pre/Asymptomatic COVID-19." in: **Annals of surgery**, Vol. 272, Issue 6, pp. e321-e328, (2020) ([PubMed](#)).



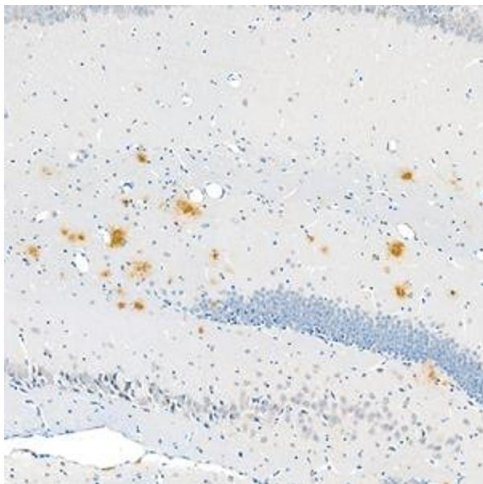
#### Immunohistochemistry (Paraffin-embedded Sections)

**Image 1.** Immunohistochemistry analysis of paraffin embedded mouse Alzheimer's brain using A $\beta$ 40 (ABIN7073042) at dilution of 1:400



#### Immunohistochemistry (Paraffin-embedded Sections)

**Image 2.** Immunohistochemistry analysis of paraffin embedded mouse Alzheimer's brain using A $\beta$ 40 (ABIN7073042) at dilution of 1:1000



#### Immunohistochemistry (Paraffin-embedded Sections)

**Image 3.** Immunohistochemistry analysis of paraffin embedded mouse Alzheimer's brain using A $\beta$ 40 (ABIN7073042) at dilution of 1:400 (180x lens)