

Datasheet for ABIN7073056  
**anti-ANKK1 antibody**



[Go to Product page](#)

2 Images

## Overview

Quantity:	100 µL
Target:	ANKK1
Reactivity:	Human
Host:	Rabbit
Clonality:	Polyclonal
Conjugate:	This ANKK1 antibody is un-conjugated
Application:	Immunohistochemistry (IHC), Immunofluorescence (IF)

## Product Details

Immunogen:	KLH conjugated Synthetic peptide corresponding to Mouse ANKK1
Cross-Reactivity:	Human
Purification:	Affinity purification

## Target Details

Target:	ANKK1
Alternative Name:	ANKK1 ( <a href="#">ANKK1 Products</a> )
Background:	ANKK1 (ankyrin repeat and kinase domain containing 1), also known as PPK2 or SGK288, is a 765 amino acid protein that belongs to the Ser/Thr protein kinase family and contains 12 ANK repeats and one protein kinase domain. Highly expressed in brain tissue and present in lower amounts in placenta and spinal cord, ANKK1 functions to catalyze the ATP-dependent phosphorylation of target proteins and is thought to play a role in alcohol and nicotine

## Target Details

dependence. The gene encoding ANKK1 maps to human chromosome 11, which houses over 1,400 genes and comprises nearly 4 % of the human genome.

Gene ID: 244859

NCBI Accession: [NP\\_766510](#)

UniProt: [Q8BZ25](#)

## Application Details

Application Notes: IHC/IF (H) 1:100-1:400

Restrictions: For Research Use only

## Handling

Format: Liquid

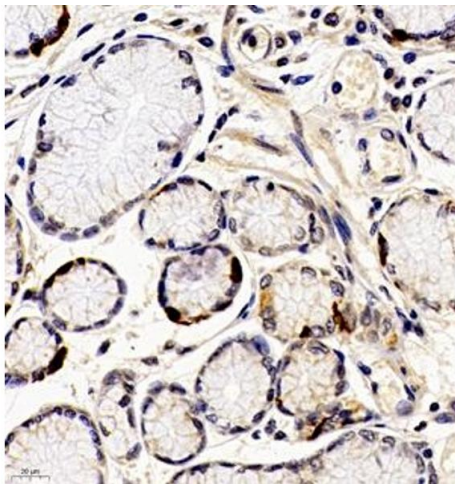
Buffer: PBS, pH 7.4, 0.02 % sodium azide

Preservative: Sodium azide

Precaution of Use: This product contains Sodium azide: a POISONOUS AND HAZARDOUS SUBSTANCE which should be handled by trained staff only.

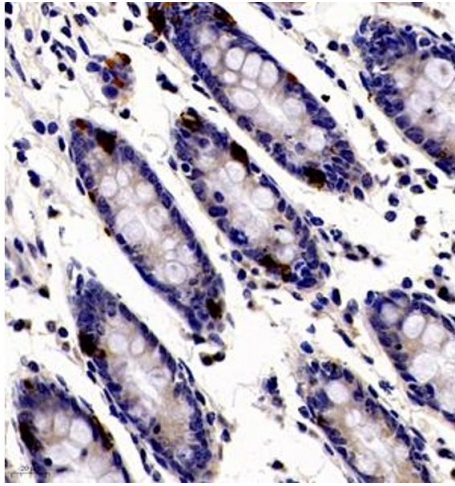
Storage: -20 °C

## Images



### Immunohistochemistry (Paraffin-embedded Sections)

**Image 1.** Immunohistochemistry of paraffin embedded human gastric cancer using ANKK1 (ABIN7073056) at dilution of 1:200 (400x lens)



#### Immunohistochemistry (Paraffin-embedded Sections)

**Image 2.** Immunohistochemistry of paraffin embedded human colon using ANKK1 (ABIN7073056) at dilution of 1:200 (400x lens)