

Datasheet for ABIN7073061
anti-Annexin A13 antibody[Go to Product page](#)

2 Images

Overview

Quantity:	100 µL
Target:	Annexin A13 (ANXA13)
Reactivity:	Human, Mouse
Host:	Rabbit
Clonality:	Polyclonal
Conjugate:	This Annexin A13 antibody is un-conjugated
Application:	Immunohistochemistry (IHC), Immunofluorescence (IF)

Product Details

Immunogen:	Recombinant protein corresponding to Mouse ANXA13
Cross-Reactivity:	Human
Purification:	Affinity purification

Target Details

Target:	Annexin A13 (ANXA13)
Alternative Name:	Annexin-13/ANXA13 (ANXA13 Products)
Background:	This gene encodes a member of the annexin family. Members of this calcium-dependent phospholipid-binding protein family play a role in the regulation of cellular growth and in signal transduction pathways. The Annexin A13 is considered the original progenitor of the 12 members of vertebrate Annexins. The expression of Annexin A13 is highly tissue-specific, being expressed only in intestinal and kidney epithelial cells. This expression is associated with a

Target Details

highly differentiated intracellular transport function. It is associated with the plasma membrane of undifferentiated, proliferating endothelial cells and differentiated villus enterocytes.

Gene ID: 69787

NCBI Accession: [NP_081487](#)

UniProt: [Q99JG3](#)

Application Details

Application Notes: IHC/IF (H,M) 1:1500-1:3000

Restrictions: For Research Use only

Handling

Format: Liquid

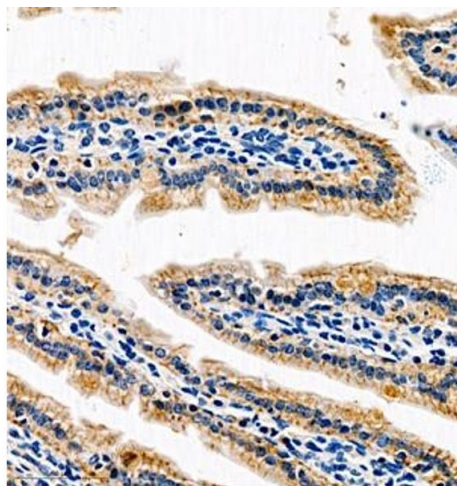
Buffer: PBS, pH 7.4, 0.02 % sodium azide

Preservative: Sodium azide

Precaution of Use: This product contains Sodium azide: a POISONOUS AND HAZARDOUS SUBSTANCE which should be handled by trained staff only.

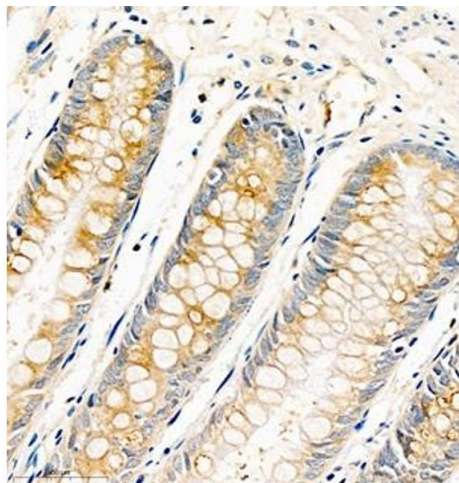
Storage: -20 °C

Images



Immunohistochemistry (Paraffin-embedded Sections)

Image 1. Immunohistochemistry of paraffin embedded mouse small intestine using AnnexinA13 (ABIN7073061) at dilution of 1:1500 (400x lens)



Immunohistochemistry (Paraffin-embedded Sections)

Image 2. Immunohistochemistry of paraffin embedded human colon cancer using AnnexinA13 (ABIN7073061) at dilution of 1:1500 (400x lens)