

Datasheet for ABIN7073066
anti-Annexin IV antibody

9 Images

[Go to Product page](#)

Overview

Quantity:	100 µL
Target:	Annexin IV (ANXA4)
Reactivity:	Human, Mouse, Rat
Host:	Rabbit
Clonality:	Polyclonal
Conjugate:	This Annexin IV antibody is un-conjugated
Application:	Western Blotting (WB), Immunohistochemistry (IHC), Immunofluorescence (IF)

Product Details

Immunogen:	KLH conjugated Synthetic peptide corresponding to Mouse Annexin-4
Cross-Reactivity:	Human, Rat
Purification:	Affinity purification

Target Details

Target:	Annexin IV (ANXA4)
Alternative Name:	Annexin-4/ANXA4 (ANXA4 Products)
Background:	The Annexins are a family of structurally similar proteins. Annexins bind to phospholipids and may be involved in regulation of membrane transport, membrane channel activity, and interaction of the cell membrane with the extracellular matrix. Annexin A4 belongs to the annexin family of calcium dependent phospholipid binding proteins. Although their functions are still not clearly defined, several members of the annexin family have been implicated in

Target Details

membrane related events along exocytotic and endocytotic pathways. Isolated from human placenta, ANXA4 encodes a protein that has possible interactions with ATP, and has in vitro anticoagulant activity and also inhibits phospholipase A2 activity. ANXA4 is almost exclusively expressed in epithelial cells.

Molecular Weight: 36 kDa

Gene ID: 11746

NCBI Accession: [NP_001318049](#)

UniProt: [P97429](#)

Application Details

Application Notes: WB (H,M,R) 1:500-1:1000, IHC/IF (M,R) 1:1500-1:3000/1:1500-1:3000

Restrictions: For Research Use only

Handling

Format: Liquid

Buffer: PBS, pH 7.4, 0.02 % sodium azide

Preservative: Sodium azide

Precaution of Use: This product contains Sodium azide: a POISONOUS AND HAZARDOUS SUBSTANCE which should be handled by trained staff only.

Storage: -20 °C

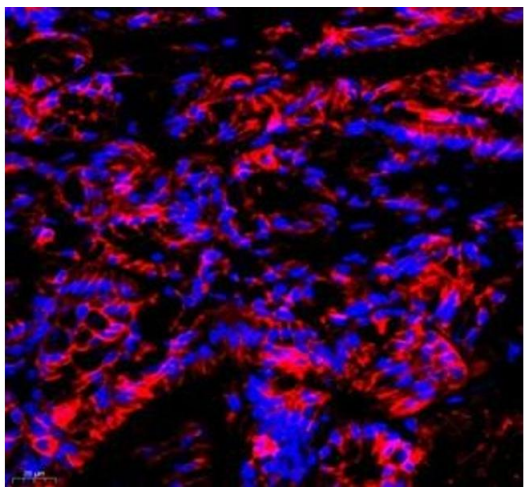
Western Blotting

Image 1. Western blot analysis of Annexin-A4 (ABIN7073066) at dilution of 1: 500



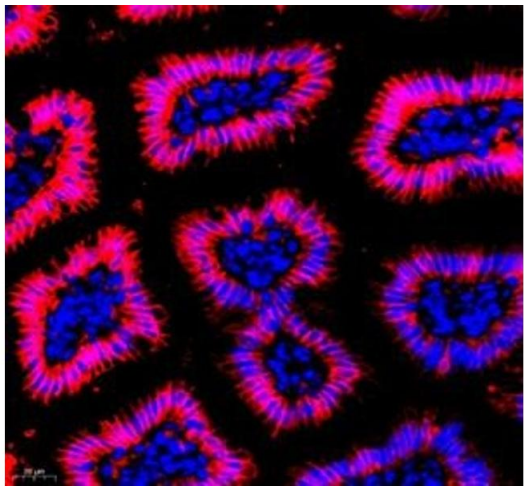
Immunofluorescence (Paraffin-embedded Sections)

Image 2. Immunofluorescence of paraffin embedded mouse colon using Annexin-A4 (ABIN7073066) at dilution of 1: 1800 (400x lens)



Immunofluorescence (Paraffin-embedded Sections)

Image 3. Immunofluorescence of paraffin embedded mouse small intestine using Annexin-A4 (ABIN7073066) at dilution of 1: 1800 (400x lens)



Please check the [product details page](#) for more images. Overall 9 images are available for ABIN7073066.