



[Go to Product page](#)

Datasheet for ABIN7073154 **anti-ATPase (Na/K) antibody**

8 Images

Overview

Quantity:	100 µL
Target:	ATPase (Na/K)
Reactivity:	Human, Rat, Mouse
Host:	Rabbit
Clonality:	Polyclonal
Conjugate:	This ATPase (Na/K) antibody is un-conjugated
Application:	Western Blotting (WB), Immunofluorescence (IF), Immunohistochemistry (IHC)

Product Details

Immunogen:	KLH conjugated Synthetic peptide corresponding to Human ATP1A1
Cross-Reactivity:	Mouse, Rat
Purification:	Affinity purification

Target Details

Target:	ATPase (Na/K)
Alternative Name:	Sodium Potassium ATPase (ATPase (Na/K) Products)
Background:	Na ⁺ /K ⁺ -ATPase is an integral membrane protein responsible for establishing and maintaining the electrochemical gradients of Na and K ions across the plasma membrane. These gradients are essential for osmoregulation, for sodium-coupled transport of a variety of organic and inorganic molecules, and for electrical excitability of nerve and muscle. This enzyme is composed of two subunits, a large catalytic subunit (alpha) and a smaller glycoprotein subunit

Target Details

	(beta).
Molecular Weight:	100 kDa
Gene ID:	11928
NCBI Accession:	NP_000692
UniProt:	P05023

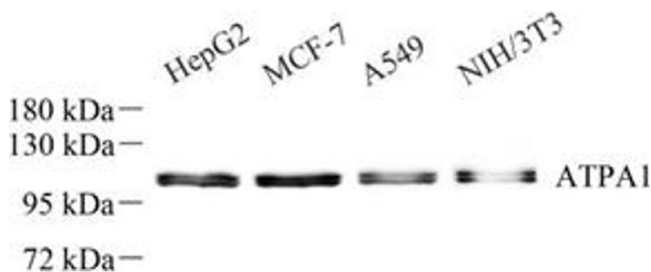
Application Details

Application Notes:	WB (H,M,R) 1:500-1:1000, IHC/IF (H,M,R) 1:500-1:1000/1:500-1:1000
Restrictions:	For Research Use only

Handling

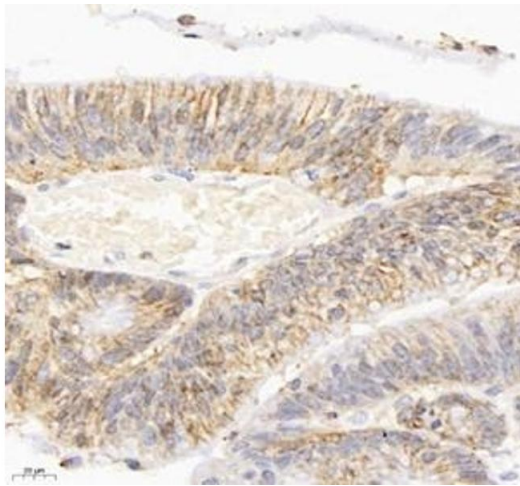
Format:	Liquid
Buffer:	PBS, pH 7.4, 0.02 % sodium azide
Preservative:	Sodium azide
Precaution of Use:	This product contains Sodium azide: a POISONOUS AND HAZARDOUS SUBSTANCE which should be handled by trained staff only.
Storage:	-20 °C

Images



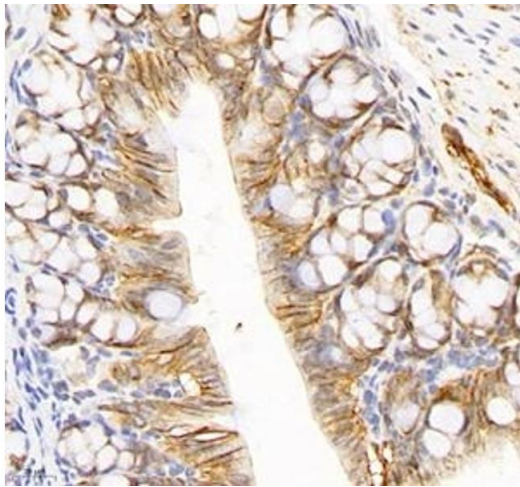
Western Blotting

Image 1. Western blot analysis of Sodium Potassium (ABIN7073154) at dilution of 1: 500



Immunohistochemistry (Paraffin-embedded Sections)

Image 2. Immunohistochemistry of paraffin embedded human colon cancer using ATP1A1 (ABIN7073154) at dilution of 1: 500 (400x lens)



Immunohistochemistry (Paraffin-embedded Sections)

Image 3. Immunohistochemistry of paraffin embedded mouse colon using ATP1A1 (ABIN7073154) at dilution of 1: 500 (400x lens)

Please check the [product details page](#) for more images. Overall 8 images are available for ABIN7073154.