

Datasheet for ABIN7073200

anti-BOK antibody**3** Images[Go to Product page](#)

Overview

Quantity:	100 µL
Target:	BOK
Reactivity:	Human, Mouse, Rat
Host:	Rabbit
Clonality:	Polyclonal
Conjugate:	This BOK antibody is un-conjugated
Application:	Immunohistochemistry (IHC), Immunofluorescence (IF)

Product Details

Immunogen:	KLH conjugated Synthetic peptide corresponding to Mouse Bok
Cross-Reactivity:	Human, Rat
Purification:	Affinity purification

Target Details

Target:	BOK
Alternative Name:	Bok (BOK Products)
Background:	The protein encoded by this gene belongs to the BCL2 family, members of which form homo- or heterodimers, and act as anti- or proapoptotic regulators that are involved in a wide variety of cellular processes. Studies in rat show that this protein has restricted expression in reproductive tissues, interacts strongly with some antiapoptotic BCL2 proteins, not at all with proapoptotic BCL2 proteins, and induces apoptosis in transfected cells. Thus, this protein

Target Details

represents a proapoptotic member of the BCL2 family.

Gene ID: 51800

UniProt: [O35425](#)

Pathways: [Positive Regulation of Endopeptidase Activity](#)

Application Details

Application Notes: IHC/IF (H,M,R) 1:600-1:1500

Restrictions: For Research Use only

Handling

Format: Liquid

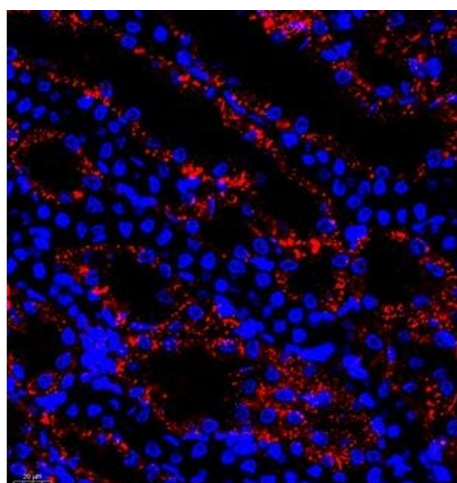
Buffer: PBS, pH 7.4, 0.02 % sodium azide

Preservative: Sodium azide

Precaution of Use: This product contains Sodium azide: a POISONOUS AND HAZARDOUS SUBSTANCE which should be handled by trained staff only.

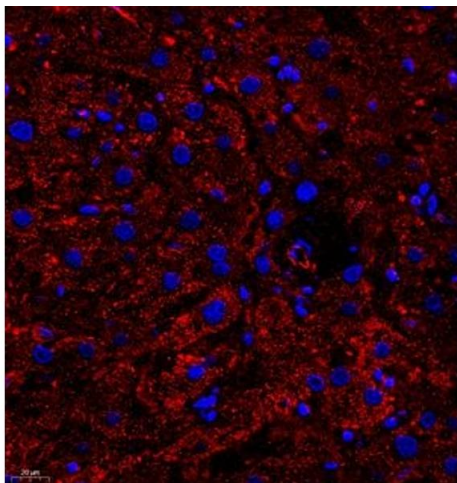
Storage: -20 °C

Images



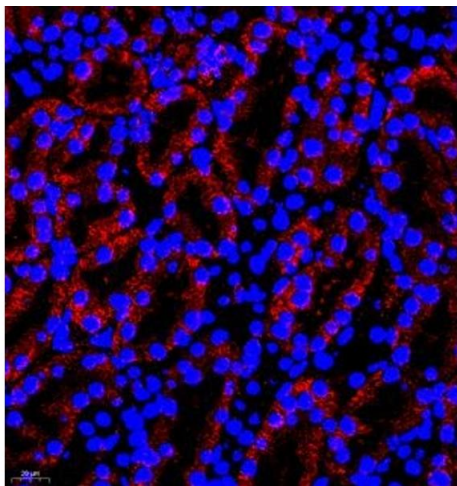
Immunofluorescence (Paraffin-embedded Sections)

Image 1. Immunofluorescence of paraffin embedded rat kidney using B0K (ABIN7073200) at dilution of 1:750 (400x lens)



Immunofluorescence (Paraffin-embedded Sections)

Image 2. Immunofluorescence of paraffin embedded human liver using B0K (ABIN7073200) at dilution of 1:750 (400x lens)



Immunofluorescence (Paraffin-embedded Sections)

Image 3. Immunofluorescence of paraffin embedded mouse kidney using B0K (ABIN7073200) at dilution of 1:750 (400x lens)