

## Datasheet for ABIN7073215

**anti-BMP4 antibody**

## 2 Images

[Go to Product page](#)

## Overview

Quantity:	100 µL
Target:	BMP4
Reactivity:	Rat, Mouse
Host:	Rabbit
Clonality:	Polyclonal
Conjugate:	This BMP4 antibody is un-conjugated
Application:	Immunohistochemistry (IHC), Immunofluorescence (IF)

## Product Details

Immunogen:	Recombinant protein corresponding to Mouse Mouse BMP4.
Cross-Reactivity:	Rat
Purification:	Affinity purification

## Target Details

Target:	BMP4
Alternative Name:	BMP4 ( <a href="#">BMP4 Products</a> )
Background:	BMP4 is a polypeptide belonging to the TGF- $\beta$ superfamily of proteins, which binds to 2 different types of serine-threonine kinase receptors known as BMPR1 and BMPR2. Signal transduction via these receptors occurs via Smad and map kinase pathways to effect transcription of its target genes. Like other bone morphogenetic proteins, it is involved in bone and cartilage development, specifically tooth and limb development and fracture repair, playing an important

## Target Details

	role in the onset of endochondral bone formation in humans. It has been shown to be involved in muscle development, bone mineralization, and ureteric bud development.
Gene ID:	12159
NCBI Accession:	<a href="#">NP_001303289</a>
UniProt:	<a href="#">P21275</a>
Pathways:	<a href="#">Steroid Hormone Mediated Signaling Pathway</a> , <a href="#">Regulation of Muscle Cell Differentiation</a> , <a href="#">Tube Formation</a> , <a href="#">Skeletal Muscle Fiber Development</a>

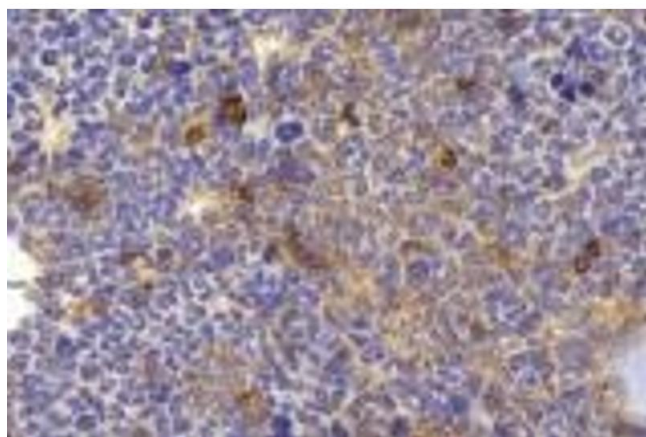
## Application Details

Application Notes:	IHC/IF (M,R) 1:1000-1:4000/1:1000-1:2000
Restrictions:	For Research Use only

## Handling

Format:	Liquid
Buffer:	PBS, pH 7.4, 0.02 % sodium azide
Preservative:	Sodium azide
Precaution of Use:	This product contains Sodium azide: a POISONOUS AND HAZARDOUS SUBSTANCE which should be handled by trained staff only.
Storage:	-20 °C

## Images



### Immunohistochemistry (Paraffin-embedded Sections)

**Image 1.** Immunohistochemistry analysis of paraffin-embedded mouse bone using BMP4 (ABIN7073215) at dilution of 1:2000.



#### Immunohistochemistry (Paraffin-embedded Sections)

**Image 2.** Immunohistochemistry analysis of paraffin-embedded mouse bone using BMP4 (ABIN7073215) at dilution of 1:2000.