



## Datasheet for ABIN7073219 anti-BSP antibody



[Go to Product page](#)

### 1 Image

#### Overview

Quantity:	100 µL
Target:	BSP
Reactivity:	Mouse, Rat
Host:	Rabbit
Clonality:	Polyclonal
Conjugate:	This BSP antibody is un-conjugated
Application:	Immunohistochemistry (IHC), Immunofluorescence (IF)

#### Product Details

Immunogen:	KLH conjugated Synthetic peptide corresponding to Mouse Bone Sialoprotein
Cross-Reactivity:	Rat
Purification:	Affinity purification

#### Target Details

Target:	BSP
Alternative Name:	Bone Sialoprotein ( <a href="#">BSP Products</a> )
Background:	Bone sialoprotein (BSP) is a component of mineralized tissues such as bone, dentin, cementum and calcified cartilage. BSP is a significant component of the bone extracellular matrix and has been suggested to constitute approximately 8 % of all non-collagenous proteins found in bone and cementum. It is synthesized by skeletal-associated cell types, including hypertrophic chondrocytes, osteoblasts, osteocytes, and osteoclasts. The only extraskelatal site of its

## Target Details

synthesis is the trophoblast. This protein binds to calcium and hydroxyapatite via its acidic amino acid clusters, and mediates cell attachment through an RGD sequence that recognizes the vitronectin receptor.

Gene ID: 15891

NCBI Accession: [NP\\_032344](#)

UniProt: [Q61711](#)

## Application Details

Application Notes: IHC/IF (M,R) 1:500-1:1500/1:500-1:1000

Restrictions: For Research Use only

## Handling

Format: Liquid

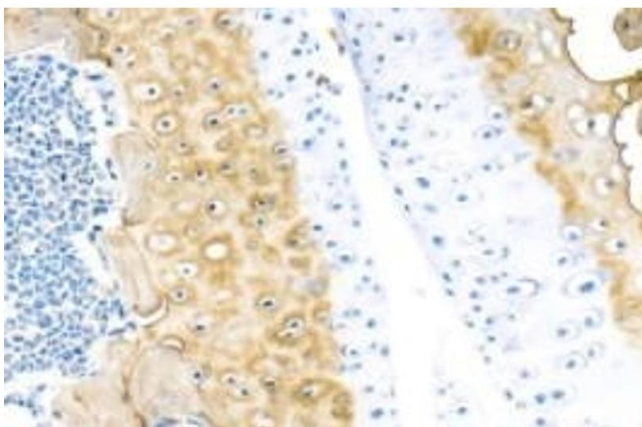
Buffer: PBS, pH 7.4, 0.02 % sodium azide

Preservative: Sodium azide

Precaution of Use: This product contains Sodium azide: a POISONOUS AND HAZARDOUS SUBSTANCE which should be handled by trained staff only.

Storage: -20 °C

## Images



### Immunohistochemistry (Paraffin-embedded Sections)

**Image 1.** Immunohistochemistry analysis of paraffin-embedded mouse bone using Bone Sialoprotein (ABIN7073219) at dilution of 1: 750