

Datasheet for ABIN7073234
anti-BPTF antibody



[Go to Product page](#)

6 Images

Overview

Quantity:	100 µL
Target:	BPTF
Reactivity:	Human, Mouse, Rat
Host:	Rabbit
Clonality:	Polyclonal
Conjugate:	This BPTF antibody is un-conjugated
Application:	Immunohistochemistry (IHC), Immunofluorescence (IF)

Product Details

Immunogen:	Recombinant protein corresponding to Human BPTF
Cross-Reactivity:	Mouse, Rat
Purification:	Affinity purification

Target Details

Target:	BPTF
Alternative Name:	BPTF/FALZ (BPTF Products)
Background:	FALZ/BPTF is a histone-binding component of NURF (nucleosome remodeling factor), a complex that catalyzes ATP-dependent nucleosome sliding and facilitates transcription of chromatin. This gene was identified in brain homogenates from patients with Alzheimer's disease. Analysis of the original protein (fetal Alz-50 reactive clone 1, or FAC1), containing a DNA-binding domain, a zinc finger motif, and a C-terminal bromodomain, suggested it might

Target Details

play a role in the regulation of transcription during proliferation. High levels of FAC1 were detected in fetal brain and in patients with neurodegenerative diseases. This protein is highly similar to the largest subunit of the Drosophila NURF (nucleosome remodeling factor) complex. In Drosophila, the NURF complex, which catalyzes nucleosome sliding on DNA and interacts with sequence-specific transcription factors, is necessary for the chromatin remodeling required for transcription.

Gene ID: 2186

NCBI Accession: [NP_004450](#)

UniProt: [Q12830](#)

Application Details

Application Notes: IHC/IF (H,M,R) 1:500-1:1000

Restrictions: For Research Use only

Handling

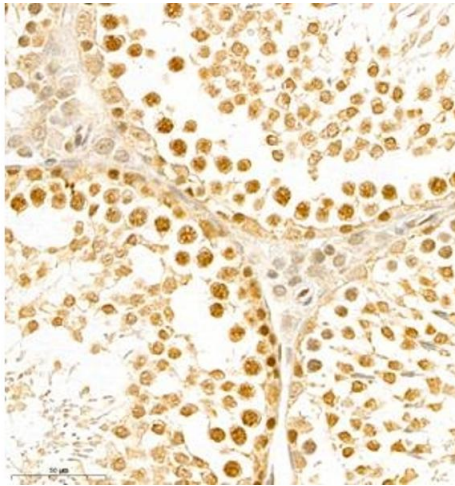
Format: Liquid

Buffer: PBS, pH 7.4, 0.02 % sodium azide

Preservative: Sodium azide

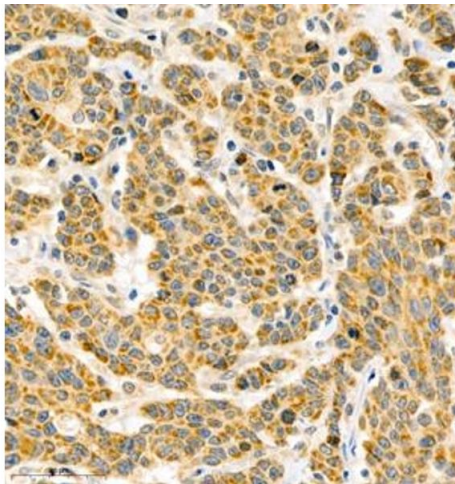
Precaution of Use: This product contains Sodium azide: a POISONOUS AND HAZARDOUS SUBSTANCE which should be handled by trained staff only.

Storage: -20 °C



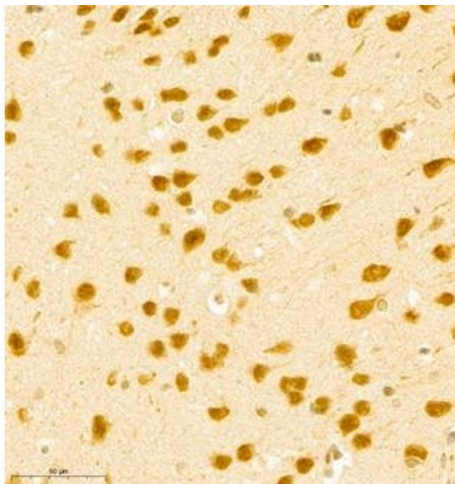
Immunohistochemistry (Paraffin-embedded Sections)

Image 1. Immunohistochemistry of paraffin embedded rat testis using BPTF (ABIN7073234) at dilution of 1:1000 (400x lens)



Immunohistochemistry (Paraffin-embedded Sections)

Image 2. Immunohistochemistry of paraffin embedded human colon cancer using BPTF (ABIN7073234) at dilution of 1:500 (400x lens)



Immunohistochemistry (Paraffin-embedded Sections)

Image 3. Immunohistochemistry of paraffin embedded mouse brain using BPTF (ABIN7073234) at dilution of 1:500 (400x lens)

Please check the [product details page](#) for more images. Overall 6 images are available for ABIN7073234.