



[Go to Product page](#)

Datasheet for ABIN7073237

## anti-BUB1 antibody

### 1 Image

#### Overview

Quantity:	100 µL
Target:	BUB1
Reactivity:	Mouse, Rat
Host:	Rabbit
Clonality:	Polyclonal
Conjugate:	This BUB1 antibody is un-conjugated
Application:	Immunohistochemistry (IHC), Immunofluorescence (IF)

#### Product Details

Immunogen:	KLH conjugated Synthetic peptide corresponding to Mouse Bub1
Cross-Reactivity:	Rat
Purification:	Affinity purification

#### Target Details

Target:	BUB1
Alternative Name:	Bub1 ( <a href="#">BUB1 Products</a> )
Background:	Bub1 is an evolutionarily conserved mitotic checkpoint control protein that is present in diverse organisms including yeast and humans. The kinase functions in part by phosphorylating a member of the mitotic checkpoint complex and activating the spindle checkpoint. Mutations in this gene have been associated with aneuploidy and several forms of cancer.
Gene ID:	12235

## Target Details

NCBI Accession: [NP\\_001106650](#)

UniProt: [O08901](#)

## Application Details

Application Notes: IHC/IF (M,R) 1:800-1:1600

Restrictions: For Research Use only

## Handling

Format: Liquid

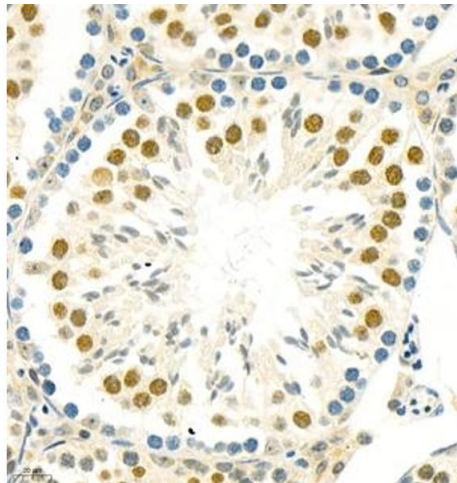
Buffer: PBS, pH 7.4, 0.02 % sodium azide

Preservative: Sodium azide

Precaution of Use: This product contains Sodium azide: a POISONOUS AND HAZARDOUS SUBSTANCE which should be handled by trained staff only.

Storage: -20 °C

## Images



### Immunohistochemistry (Paraffin-embedded Sections)

**Image 1.** Immunohistochemistry of paraffin embedded mouse testis using BUB1 (ABIN7073237) at dilution of 1:800 (400x lens)