



Datasheet for ABIN7073248 anti-CLEC2D antibody



[Go to Product page](#)

1 Image

Overview

Quantity:	100 µL
Target:	CLEC2D
Reactivity:	Rat
Host:	Rabbit
Clonality:	Polyclonal
Conjugate:	This CLEC2D antibody is un-conjugated
Application:	Western Blotting (WB)

Product Details

Immunogen:	Recombinant protein corresponding to Mouse CLEC2D
Cross-Reactivity:	Rat
Purification:	Affinity purification

Target Details

Target:	CLEC2D
Alternative Name:	CLEC2D (CLEC2D Products)
Background:	CLEC2D (C-type lectin domain family 2 member D), also known as LLT1 (lectin-like transcript 1) or OCIL (Osteoclast inhibitory lectin), is a single-pass type II membrane protein expressed by hematopoietic cells and osteoblasts . Its expression was found to be tightly correlated with activation on T cells, NK cells, B cells, and DCs . CLEC2D is a ligand for the human NKR-P1A (CD161) receptor and that their interaction differentially regulates NK- and T-cell functions . It

Target Details

inhibits the formation and function of osteoclasts and modulates the release of interferon-gamma by human NK cells.

Molecular Weight: 24 kDa

Gene ID: 93694

NCBI Accession: [NP_444339](#)

UniProt: [Q91V08](#)

Pathways: [Regulation of Leukocyte Mediated Immunity](#)

Application Details

Application Notes: WB (R) 1:500- 1:1000

Restrictions: For Research Use only

Handling

Format: Liquid

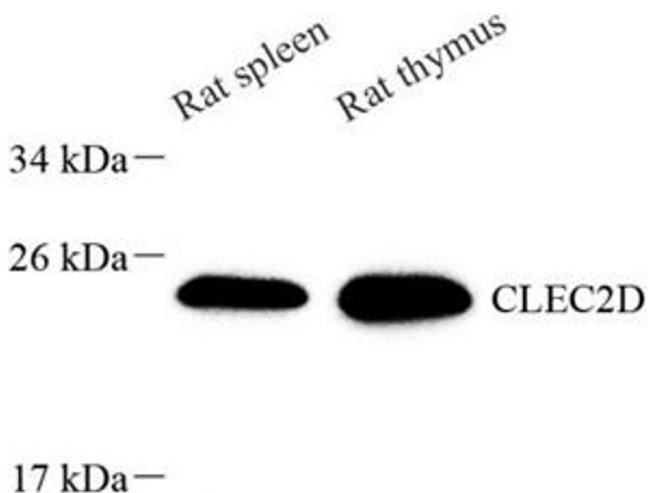
Buffer: PBS, pH 7.4, 0.02 % sodium azide

Preservative: Sodium azide

Precaution of Use: This product contains Sodium azide: a POISONOUS AND HAZARDOUS SUBSTANCE which should be handled by trained staff only.

Storage: -20 °C

Images



Western Blotting

Image 1. Western blot analysis of CLEC2D (ABIN7073248) at dilution of 1: 1000