



[Go to Product page](#)

Datasheet for ABIN7073250 anti-CLEC5A antibody

1 Image

Overview

Quantity:	100 µL
Target:	CLEC5A
Reactivity:	Mouse, Rat
Host:	Rabbit
Clonality:	Polyclonal
Conjugate:	This CLEC5A antibody is un-conjugated
Application:	Western Blotting (WB)

Product Details

Immunogen:	Recombinant protein corresponding to Mouse CLEC5A
Cross-Reactivity:	Rat
Purification:	Affinity purification

Target Details

Target:	CLEC5A
Alternative Name:	CLEC5A (CLEC5A Products)
Background:	This gene encodes a member of the C-type lectin/C-type lectin-like domain (CTL/CTLD) superfamily. Members of this family share a common protein fold and have diverse functions, such as cell adhesion, cell-cell signalling, glycoprotein turnover, and roles in inflammation and immune response. The encoded type II transmembrane protein interacts with dnax-activation protein 12 and may play a role in cell activation. Alternative splice variants have been described

Target Details

but their full-length sequence has not been determined.

Molecular Weight: 25 kDa

Gene ID: 23845

NCBI Accession: [NP_001033693](#)

UniProt: [Q9R007](#)

Application Details

Application Notes: WB (M,R) 1:250-1:500

Restrictions: For Research Use only

Handling

Format: Liquid

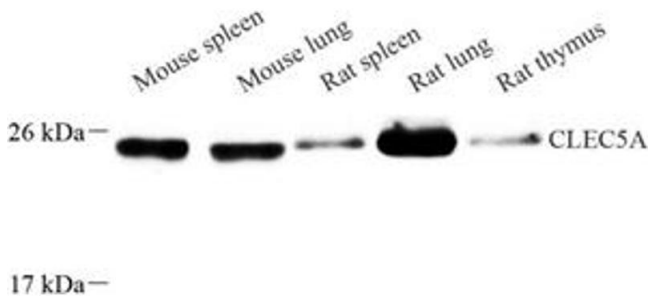
Buffer: PBS, pH 7.4, 0.02 % sodium azide

Preservative: Sodium azide

Precaution of Use: This product contains Sodium azide: a POISONOUS AND HAZARDOUS SUBSTANCE which should be handled by trained staff only.

Storage: -20 °C

Images



Western Blotting

Image 1. Western blot analysis of CLEC5A (ABIN7073250) at dilution of 1: 250