

Datasheet for ABIN7073301

anti-CHST8 antibody[Go to Product page](#)**2** Images

Overview

Quantity:	100 µL
Target:	CHST8
Reactivity:	Mouse, Rat
Host:	Rabbit
Clonality:	Polyclonal
Conjugate:	This CHST8 antibody is un-conjugated
Application:	Immunofluorescence (IF), Immunohistochemistry (IHC)

Product Details

Immunogen:	Recombinant protein corresponding to Mouse CHST8
Cross-Reactivity:	Rat
Purification:	Affinity purification

Target Details

Target:	CHST8
Alternative Name:	CHST8 (CHST8 Products)
Background:	The protein encoded by this gene belongs to the sulfotransferase 2 family. It is predominantly expressed in the pituitary gland, and is localized to the golgi membrane. This protein catalyzes the transfer of sulfate to position 4 of non-reducing N-acetylgalactosamine (GalNAc) residues in both N-glycans and O-glycans. It is responsible for sulfation of GalNAc on luteinizing hormone (LH), which is required for production of the sex hormones. Mice lacking this enzyme,

Target Details

exhibit increased levels of circulating LH, and precocious sexual maturation of both male and female mice. Alternatively spliced transcript variants have been found for this gene.

Gene ID: 68947

NCBI Accession: [NP_780349](#)

UniProt: [Q8BQ86](#)

Application Details

Application Notes: IHC/IF (M,R) 1:1500-1:3000

Restrictions: For Research Use only

Handling

Format: Liquid

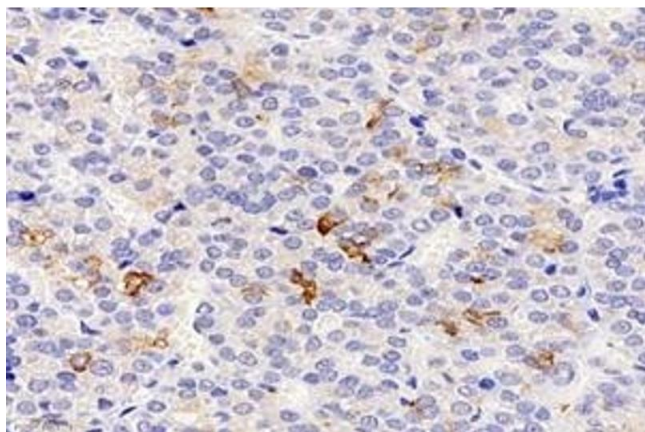
Buffer: PBS, pH 7.4, 0.02 % sodium azide

Preservative: Sodium azide

Precaution of Use: This product contains Sodium azide: a POISONOUS AND HAZARDOUS SUBSTANCE which should be handled by trained staff only.

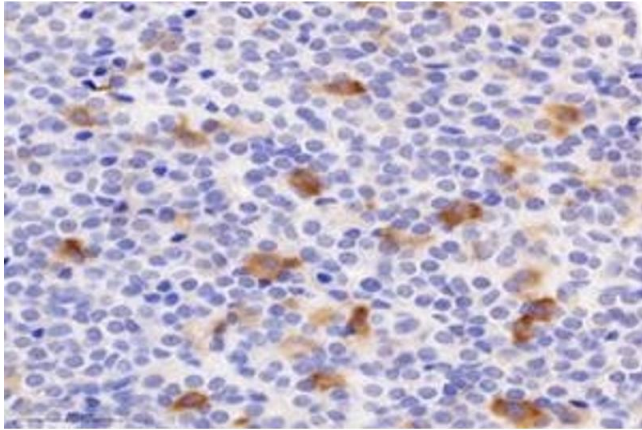
Storage: -20 °C

Images



Immunohistochemistry (Paraffin-embedded Sections)

Image 1. Immunohistochemistry analysis of paraffin-embedded rat pituitary using CHST8 (ABIN7073301) at dilution of 1: 3000



Immunohistochemistry (Paraffin-embedded Sections)

Image 2. Immunohistochemistry analysis of paraffin-embedded mouse pituitary using CHST8 (ABIN7073301) at dilution of 1: 3000