

Datasheet for ABIN7073348
anti-Cathepsin L2 antibody

6 Images

[Go to Product page](#)

Overview

Quantity:	100 µL
Target:	Cathepsin L2 (CTSL2)
Reactivity:	Human, Mouse, Rat
Host:	Rabbit
Clonality:	Polyclonal
Conjugate:	This Cathepsin L2 antibody is un-conjugated
Application:	Immunohistochemistry (IHC), Immunofluorescence (IF)

Product Details

Immunogen:	Recombinant protein corresponding to Human Cathepsin V
Cross-Reactivity:	Mouse, Rat
Purification:	Affinity purification

Target Details

Target:	Cathepsin L2 (CTSL2)
Alternative Name:	Cathepsin V (CTSL2 Products)
Background:	Cathepsin V is a lysosomal cysteine protease which has an important role in corneal physiology. Cathepsin V was found to be differentially expressed in relation to pigmented skin backgrounds, and was about 7.5-folds higher in keratinocytes from lightly pigmented, relative to darkly pigmented skins. It is expressed in primary keratinocytes, melanocytes, and HaCaT keratinocytes, but not in primary fibroblasts. The purified cathepsin L2 was a high molecular

Target Details

weight proteinase of about 78 kDa, but it was unstable to SDS and reducing conditions, which dissociated parts of the proteinase into 66 kDa, 31 kDa and 26 kDa fragments(Food Chemistry,Volume11,Issue4,879-886) and it can form a complex of 70 kDa with an unidentified subunit.

Gene ID: 1515

NCBI Accession: [NP_001188504](#)

UniProt: [O60911](#)

Pathways: [Toll-Like Receptors Cascades](#)

Application Details

Application Notes: IHC/IF (H,M,R) 1:1000-1:2000/1:300-1:600

Restrictions: For Research Use only

Handling

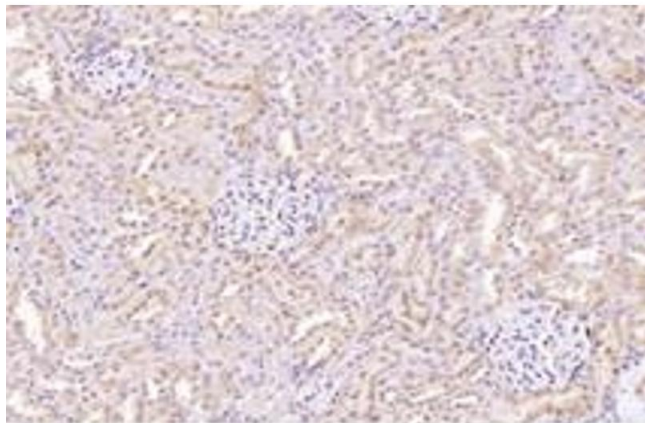
Format: Liquid

Buffer: PBS, pH 7.4, 0.02 % sodium azide

Preservative: Sodium azide

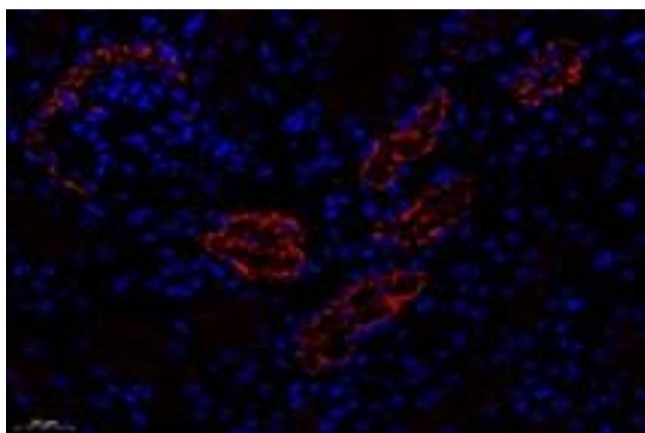
Precaution of Use: This product contains Sodium azide: a POISONOUS AND HAZARDOUS SUBSTANCE which should be handled by trained staff only.

Storage: -20 °C



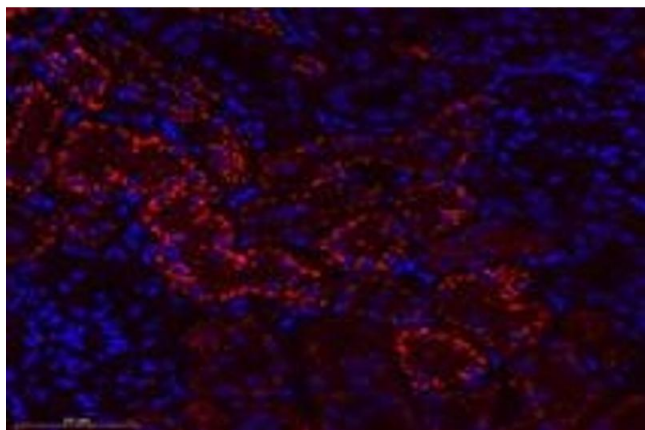
Immunohistochemistry (Paraffin-embedded Sections)

Image 1. Immunohistochemistry analysis of paraffin-embedded rat kidney using,CTSV (ABIN7073348) at dilution of 1: 2000



Immunofluorescence (fixed cells)

Image 2. Immunofluorescent analysis of paraformaldehyde-fixed mouse kidney using,CTSV (ABIN7073348) at dilution of 1: 600



Immunofluorescence (fixed cells)

Image 3. Immunofluorescent analysis of paraformaldehyde-fixed rat kidney using,CTSV (ABIN7073348) at dilution of 1: 600

Please check the [product details page](#) for more images. Overall 6 images are available for ABIN7073348.