

Datasheet for ABIN7073379

anti-CD226 antibody[Go to Product page](#)**1** Image

Overview

Quantity:	100 µL
Target:	CD226
Reactivity:	Rat
Host:	Rabbit
Clonality:	Polyclonal
Conjugate:	This CD226 antibody is un-conjugated
Application:	Western Blotting (WB)

Product Details

Immunogen:	KLH conjugated Synthetic peptide corresponding to Mouse CD226
Cross-Reactivity:	Rat
Purification:	Affinity purification

Target Details

Target:	CD226
Alternative Name:	CD226 (CD226 Products)
Background:	This gene encodes a glycoprotein expressed on the surface of NK cells, platelets, monocytes and a subset of T cells. It is a member of the Ig-superfamily containing 2 Ig-like domains of the V-set. The protein mediates cellular adhesion of platelets and megakaryocytic cells to vascular endothelial cells. The protein also plays a role in megakaryocytic cell maturation.
Molecular Weight:	65 kDa

Target Details

Gene ID:	225825
NCBI Accession:	NP_848802
UniProt:	Q8K4F0
Pathways:	Regulation of Leukocyte Mediated Immunity , Positive Regulation of Immune Effector Process , Cancer Immune Checkpoints

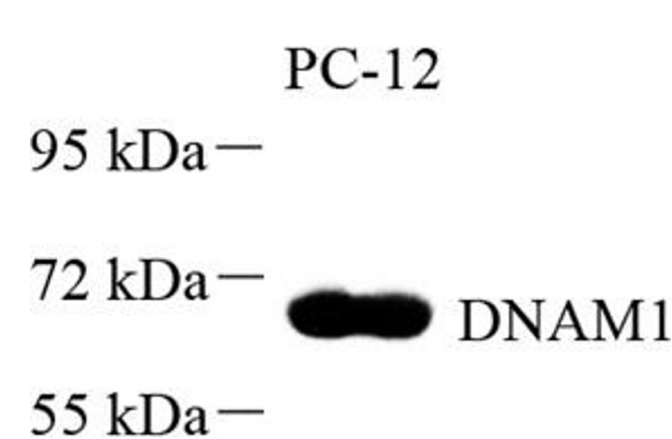
Application Details

Application Notes:	WB (R) 1:500-1:1000
Restrictions:	For Research Use only

Handling

Format:	Liquid
Buffer:	PBS, pH 7.4, 0.02 % sodium azide
Preservative:	Sodium azide
Precaution of Use:	This product contains Sodium azide: a POISONOUS AND HAZARDOUS SUBSTANCE which should be handled by trained staff only.
Storage:	-20 °C

Images



Western Blotting

Image 1. Western blot analysis of DNAM1 (ABIN7073379) at dilution of 1: 500