



Datasheet for ABIN7073418 anti-CHL1 antibody



[Go to Product page](#)

1 Image

Overview

Quantity:	100 µL
Target:	CHL1
Reactivity:	Mouse
Host:	Rabbit
Clonality:	Polyclonal
Application:	Immunohistochemistry (IHC), Immunofluorescence (IF)

Product Details

Immunogen:	KLH conjugated Synthetic peptide corresponding to Mouse CHL1
Purification:	Affinity purification

Target Details

Target:	CHL1
Alternative Name:	CHL1 (CHL1 Products)
Background:	The protein encoded by this gene is a member of the L1 gene family of neural cell adhesion molecules. It is a neural recognition molecule that may be involved in signal transduction pathways. The deletion of one copy of this gene may be responsible for mental defects in patients with 3p- syndrome. This protein may also play a role in the growth of certain cancers. Alternate splicing results in both coding and non-coding variants.
Gene ID:	12661
UniProt:	P70232

Application Details

Application Notes: IHC/IF (M) 1:200-1:400

Restrictions: For Research Use only

Handling

Format: Liquid

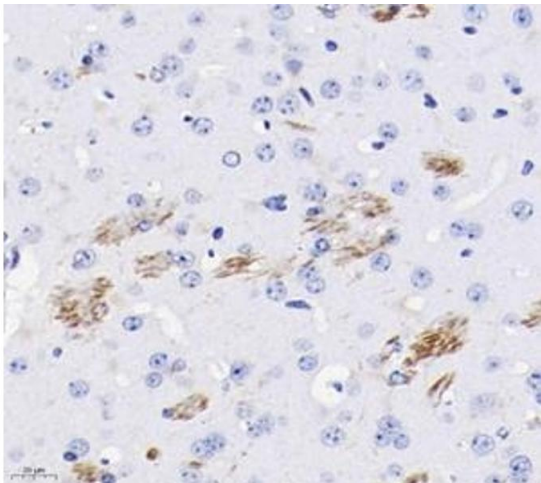
Buffer: PBS, pH 7.4, 0.02 % sodium azide

Preservative: Sodium azide

Precaution of Use: This product contains Sodium azide: a POISONOUS AND HAZARDOUS SUBSTANCE which should be handled by trained staff only.

Storage: -20 °C

Images



Immunohistochemistry (Paraffin-embedded Sections)

Image 1. Immunohistochemistry analysis of paraffin-embedded mouse brain using CHL1 (ABIN7073418) at dilution of 1: 400