

Datasheet for ABIN7073422
anti-Cdc25 antibody



[Go to Product page](#)

4 Images

Overview

Quantity:	100 µL
Target:	Cdc25 (CDC25)
Reactivity:	Mouse, Rat
Host:	Rabbit
Clonality:	Polyclonal
Conjugate:	This Cdc25 antibody is un-conjugated
Application:	Immunohistochemistry (IHC), Immunofluorescence (IF)

Product Details

Immunogen:	Recombinant protein corresponding to Mouse CDC25
Cross-Reactivity:	Rat
Purification:	Affinity purification

Target Details

Target:	Cdc25 (CDC25)
Alternative Name:	CDC25 (CDC25 Products)
Background:	The protein encoded by this gene is a guanine nucleotide exchange factor (GEF) similar to the Saccharomyces cerevisiae CDC25 gene product. Functional analysis has demonstrated that this protein stimulates the dissociation of GDP from RAS protein. The studies of the similar gene in mouse suggested that the Ras-GEF activity of this protein in brain can be activated by Ca ²⁺ influx, muscarinic receptors, and G protein beta-gamma subunit.

Target Details

Gene ID: 19417

NCBI Accession: [NP_035375](#)

UniProt: [P27671](#)

Application Details

Application Notes: IHC/IF (M,R) 1:2000-1:4000/1:1000-1:3000

Restrictions: For Research Use only

Handling

Format: Liquid

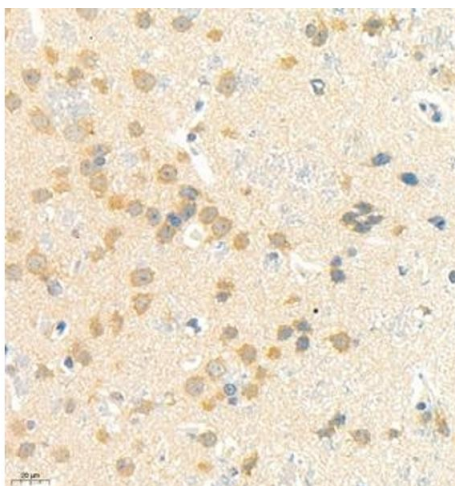
Buffer: PBS, pH 7.4, 0.02 % sodium azide

Preservative: Sodium azide

Precaution of Use: This product contains Sodium azide: a POISONOUS AND HAZARDOUS SUBSTANCE which should be handled by trained staff only.

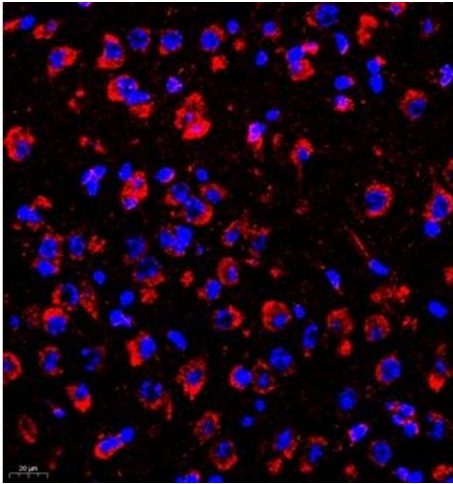
Storage: -20 °C

Images



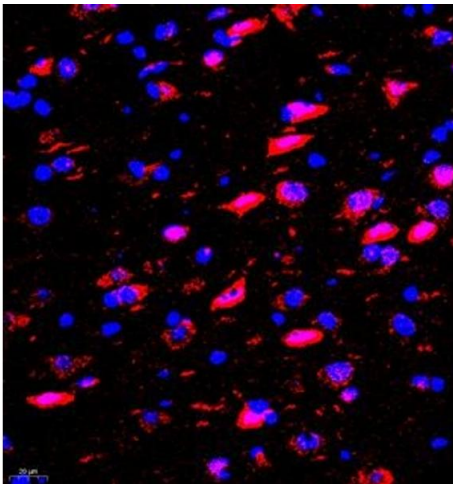
Immunohistochemistry (Paraffin-embedded Sections)

Image 1. Immunohistochemistry of paraffin embedded rat brain using rasgrf1 (ABIN7073422) at dilution of 1:4000 (400x lens)



Immunofluorescence (Paraffin-embedded Sections)

Image 2. Immunofluorescence of paraffin embedded mouse brain using rasgrf1 (ABIN7073422) at dilution of 1:2000 (400x lens)



Immunofluorescence (Paraffin-embedded Sections)

Image 3. Immunofluorescence of paraffin embedded rat brain using rasgrf1 (ABIN7073422) at dilution of 1:2000 (400x lens)

Please check the [product details page](#) for more images. Overall 4 images are available for ABIN7073422.