

Datasheet for ABIN7073445

anti-Ccl12 antibody

6 Images

[Go to Product page](#)

Overview

Quantity:	100 µL
Target:	Ccl12
Reactivity:	Mouse, Rat
Host:	Rabbit
Clonality:	Polyclonal
Conjugate:	This Ccl12 antibody is un-conjugated
Application:	Immunohistochemistry (IHC), Immunofluorescence (IF)

Product Details

Immunogen:	KLH conjugated Synthetic peptide corresponding to Mouse MCP5
Cross-Reactivity:	Rat
Purification:	Affinity purification

Target Details

Target:	Ccl12
Alternative Name:	MCP5 (Ccl12 Products)
Background:	Chemotactic factor that attracts monocytes, lymphocytes, basophils and eosinophils, but not neutrophils. Signals through CCR2B and CCR3 receptors. Plays a role in the accumulation of leukocytes at both sides of allergic and non-allergic inflammation. May be involved in the recruitment of monocytes into the arterial wall during the disease process of atherosclerosis. May play a role in the monocyte attraction in tissues chronically exposed to exogenous

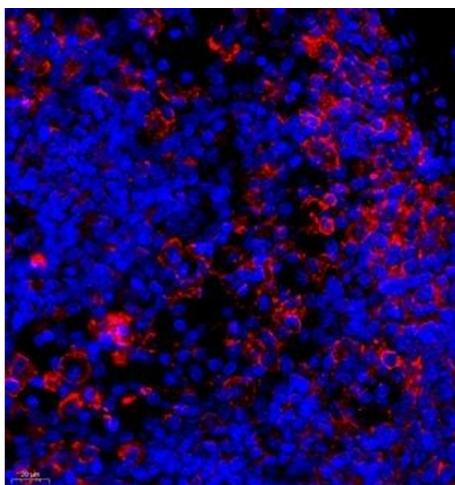
Target Details

	pathogens.
Gene ID:	20293
NCBI Accession:	NP_035461
UniProt:	Q62401
Pathways:	Cellular Response to Molecule of Bacterial Origin

Application Details

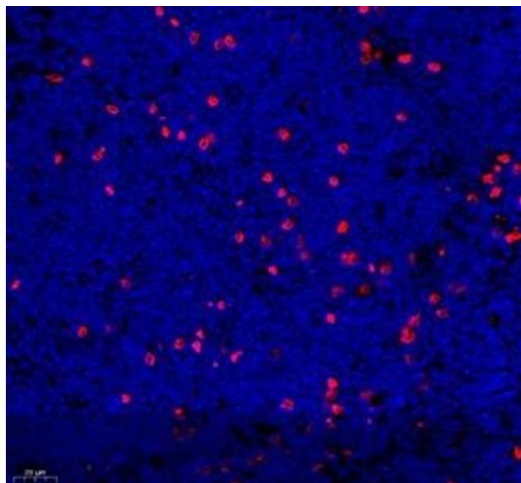
Application Notes:	IHC/IF (M,R) 1:400-1:1200
Restrictions:	For Research Use only
Handling	
Format:	Liquid
Buffer:	PBS, pH 7.4, 0.02 % sodium azide
Preservative:	Sodium azide
Precaution of Use:	This product contains Sodium azide: a POISONOUS AND HAZARDOUS SUBSTANCE which should be handled by trained staff only.
Storage:	-20 °C

Images



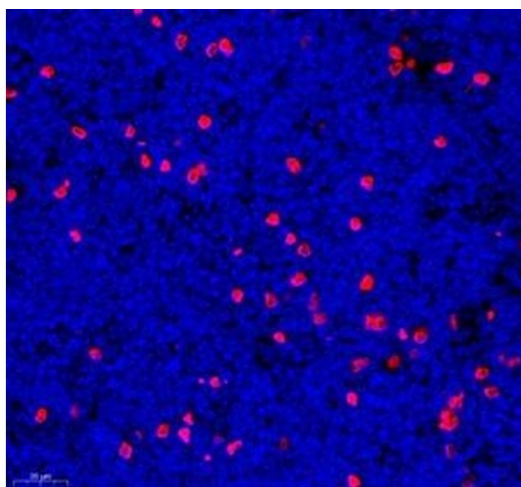
Immunofluorescence (Paraffin-embedded Sections)

Image 1. Immunofluorescence of paraffin embedded rat lymph node using mcp5 (ABIN7073445) at dilution of 1:400 (400x lens)



Immunofluorescence (Paraffin-embedded Sections)

Image 2. Immunofluorescence of paraffin embedded mouse lymph node using mcp5 (ABIN7073445) at dilution of 1:400 (400x lens)



Immunofluorescence (Paraffin-embedded Sections)

Image 3. Immunofluorescence of paraffin embedded mouse lymph node using mcp5 (ABIN7073445) at dilution of 1:600 (500x lens)

Please check the [product details page](#) for more images. Overall 6 images are available for ABIN7073445.