

Datasheet for ABIN7073457 **anti-CCR6 antibody**



[Go to Product page](#)

1 Image

Overview

Quantity:	100 µL
Target:	CCR6
Reactivity:	Human, Mouse, Rat
Host:	Rabbit
Clonality:	Polyclonal
Conjugate:	This CCR6 antibody is un-conjugated
Application:	Western Blotting (WB)

Product Details

Immunogen:	KLH conjugated Synthetic peptide corresponding to Human CCR6
Cross-Reactivity:	Mouse, Rat
Purification:	Affinity purification

Target Details

Target:	CCR6
Alternative Name:	CCR6 (CCR6 Products)
Background:	Chemokine receptor 6 also known as CCR6 is a CC chemokine receptor protein which in humans is encoded by the CCR6 gene. CCR6 has also recently been designated CD196 (cluster of differentiation 196). This protein belongs to family A of G protein-coupled receptor superfamily. The gene is preferentially expressed by immature dendritic cells and memory T cells. The ligand of this receptor is macrophage inflammatory protein 3 alpha (MIP-3 alpha).

Target Details

This receptor has been shown to be important for B-lineage maturation and antigen-driven B-cell differentiation, and it may regulate the migration and recruitment of dendritic and T cells during inflammatory and immunological responses. Alternatively spliced transcript variants that encode the same protein have been described for this gene.

Molecular Weight: 42 kDa

Gene ID: 12458

NCBI Accession: [NP_004358](#)

UniProt: [P51684](#)

Pathways: [cAMP Metabolic Process](#)

Application Details

Application Notes: WB (H,M,R) 1:1000-1:2000

Restrictions: For Research Use only

Handling

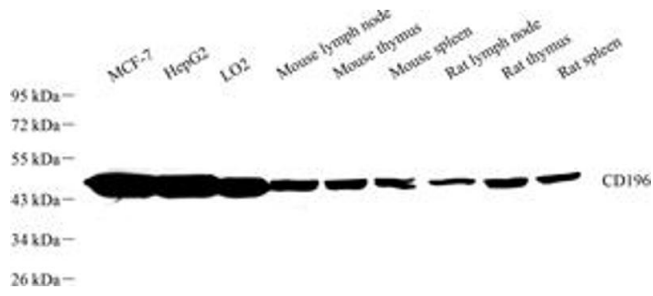
Format: Liquid

Buffer: PBS, pH 7.4, 0.02 % sodium azide

Preservative: Sodium azide

Precaution of Use: This product contains Sodium azide: a POISONOUS AND HAZARDOUS SUBSTANCE which should be handled by trained staff only.

Storage: -20 °C



Western Blotting

Image 1. Western blot analysis of CD196 (ABIN7073457) at dilution of 1:1000