



[Go to Product page](#)

Datasheet for ABIN7073461

anti-CCRL2 antibody

3 Images

Overview

Quantity:	100 µL
Target:	CCRL2
Reactivity:	Human, Mouse, Rat
Host:	Rabbit
Clonality:	Polyclonal
Conjugate:	This CCRL2 antibody is un-conjugated
Application:	Immunofluorescence (IF), Immunohistochemistry (IHC)

Product Details

Immunogen:	KLH conjugated Synthetic peptide corresponding to Mouse CCRL2
Cross-Reactivity:	Human, Rat
Purification:	Affinity purification

Target Details

Target:	CCRL2
Alternative Name:	CCRL2 (CCRL2 Products)
Background:	Receptor for CCL19 and chemerin/RARRES2. Does not appear to be a signaling receptor, but may have a role in modulating chemokine-triggered immune responses by capturing and internalizing CCL19 or by presenting RARRES2 ligand to CMKLR1, a functional signaling receptors. Plays a critical role for the development of Th2 responses.
Gene ID:	54199

Target Details

NCBI Accession: [NP_001289305](#)

UniProt: [O35457](#)

Application Details

Application Notes: IHC/IF (H,M,R) 1:150-1:300

Restrictions: For Research Use only

Handling

Format: Liquid

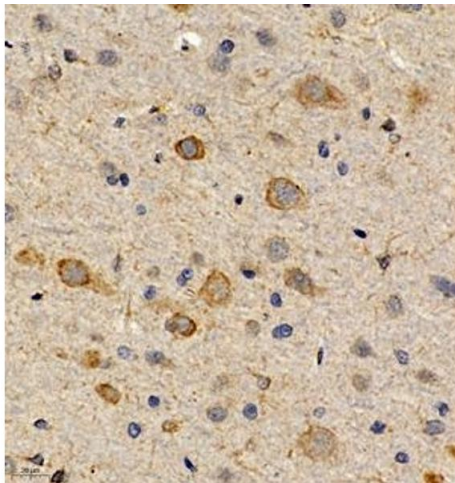
Buffer: PBS, pH 7.4, 0.02 % sodium azide

Preservative: Sodium azide

Precaution of Use: This product contains Sodium azide: a POISONOUS AND HAZARDOUS SUBSTANCE which should be handled by trained staff only.

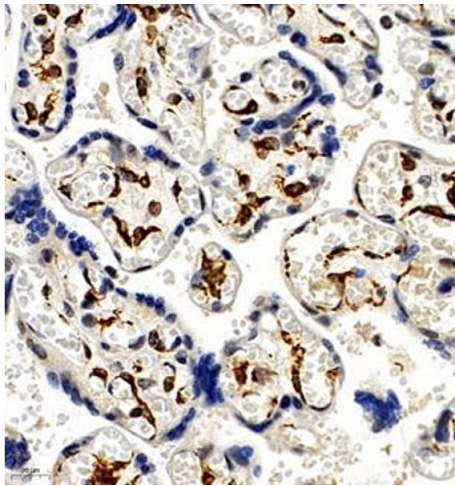
Storage: -20 °C

Images



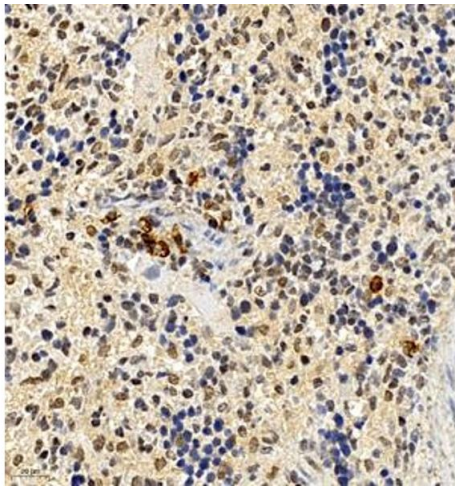
Immunohistochemistry (Paraffin-embedded Sections)

Image 1. Immunohistochemistry of paraffin embedded rat brain using CCRL2 (ABIN7073461) at dilution of 1:300 (400x lens)



Immunohistochemistry (Paraffin-embedded Sections)

Image 2. Immunohistochemistry of paraffin embedded human placenta using CCRL2 (ABIN7073461) at dilution of 1:300 (400x lens)



Immunohistochemistry (Paraffin-embedded Sections)

Image 3. Immunohistochemistry of paraffin embedded mouse spleen using CCRL2 (ABIN7073461) at dilution of 1:300 (400x lens)