



[Go to Product page](#)

Datasheet for ABIN7073472

## anti-CLCA1 antibody

### 4 Images

#### Overview

Quantity:	100 µL
Target:	CLCA1
Reactivity:	Mouse, Rat
Host:	Rabbit
Clonality:	Polyclonal
Conjugate:	This CLCA1 antibody is un-conjugated
Application:	Immunohistochemistry (IHC), Immunofluorescence (IF)

#### Product Details

Immunogen:	Recombinant protein corresponding to Mouse CLCA1
Cross-Reactivity:	Rat
Purification:	Affinity purification

#### Target Details

Target:	CLCA1
Alternative Name:	CLCA1 ( <a href="#">CLCA1 Products</a> )
Background:	This gene encodes a member of the calcium sensitive chloride conductance protein family. To date, all members of this gene family map to the same region on chromosome 1p31-p22 and share a high degree of homology in size, sequence, and predicted structure, but differ significantly in their tissue distributions. The encoded protein is expressed as a precursor protein that is processed into two cell-surface-associated subunits, although the site at which

## Target Details

the precursor is cleaved has not been precisely determined. The encoded protein may be involved in mediating calcium-activated chloride conductance in the intestine.

Gene ID: 23844

NCBI Accession: [NP\\_059502](#)

UniProt: [Q9D7Z6](#)

## Application Details

Application Notes: IHC/IF (M,R) 1:700-1:1400

Restrictions: For Research Use only

## Handling

Format: Liquid

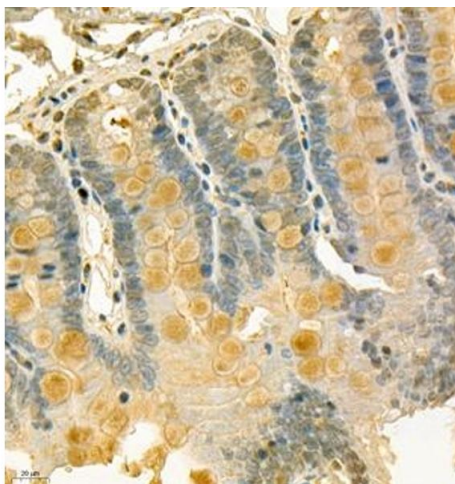
Buffer: PBS, pH 7.4, 0.02 % sodium azide

Preservative: Sodium azide

Precaution of Use: This product contains Sodium azide: a POISONOUS AND HAZARDOUS SUBSTANCE which should be handled by trained staff only.

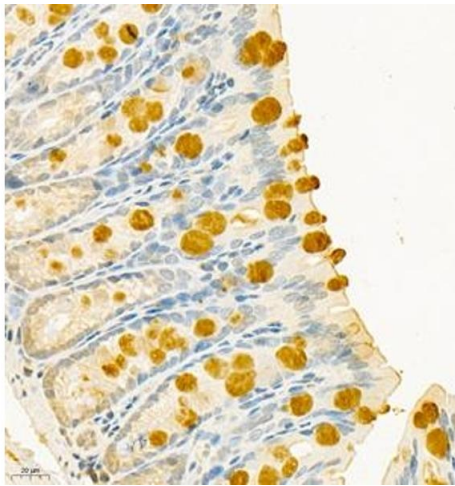
Storage: -20 °C

## Images



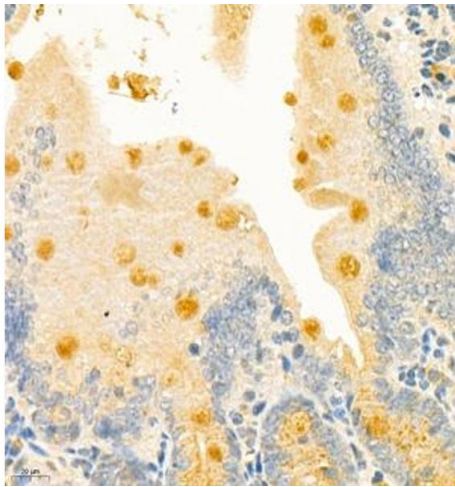
### Immunohistochemistry (Paraffin-embedded Sections)

**Image 1.** Immunohistochemistry of paraffin embedded rat duodenum using CLCA1 (ABIN7073472) at dilution of 1:700 (400x lens)



#### Immunohistochemistry (Paraffin-embedded Sections)

**Image 2.** Immunohistochemistry of paraffin embedded mouse colon using CLCA1 (ABIN7073472) at dilution of 1:700 (400x lens)



#### Immunohistochemistry (Paraffin-embedded Sections)

**Image 3.** Immunohistochemistry of paraffin embedded mouse duodenum using CLCA1 (ABIN7073472) at dilution of 1:700 (400x lens)

Please check the [product details page](#) for more images. Overall 4 images are available for ABIN7073472.