



[Go to Product page](#)

Datasheet for ABIN7073473

## anti-CLCC1 antibody

### 1 Image

#### Overview

Quantity:	100 µL
Target:	CLCC1
Reactivity:	Human, Rat, Mouse
Host:	Rabbit
Clonality:	Polyclonal
Conjugate:	This CLCC1 antibody is un-conjugated
Application:	Western Blotting (WB)

#### Product Details

Immunogen:	KLH conjugated Synthetic peptide corresponding to Human CLCC1
Cross-Reactivity:	Mouse, Rat
Purification:	Affinity purification

#### Target Details

Target:	CLCC1
Alternative Name:	CLCC1 ( <a href="#">CLCC1 Products</a> )
Background:	The CLCC1 seems to act as a chloride ion channel and plays a role in retina developmen. Diseases associated with CLCC1 include Chudley-Mccullough Syndrome and Retinitis Pigmentosa 32.
Molecular Weight:	62 kDa

## Target Details

Gene ID: 229725

NCBI Accession: [NP\\_001041675](#)

UniProt: [Q96S66](#)

Pathways: [SARS-CoV-2 Protein Interactome](#), [The Global Phosphorylation Landscape of SARS-CoV-2 Infection](#)

## Application Details

Application Notes: WB (H,M,R) 1:500-1:1000

Restrictions: For Research Use only

## Handling

Format: Liquid

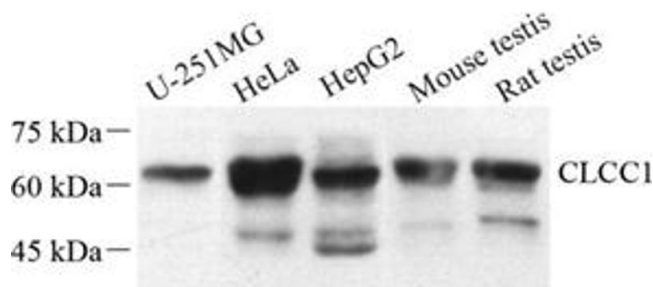
Buffer: PBS, pH 7.4, 0.02 % sodium azide

Preservative: Sodium azide

Precaution of Use: This product contains Sodium azide: a POISONOUS AND HAZARDOUS SUBSTANCE which should be handled by trained staff only.

Storage: -20 °C

## Images



### Western Blotting

**Image 1.** Western blot analysis of CLCC1 (ABIN7073473) at dilution of 1: 500