



Datasheet for ABIN7073486

anti-CSHL1 antibody



[Go to Product page](#)

3 Images

Overview

Quantity:	100 µL
Target:	CSHL1
Reactivity:	Mouse, Rat
Host:	Rabbit
Clonality:	Polyclonal
Conjugate:	This CSHL1 antibody is un-conjugated
Application:	Immunohistochemistry (IHC), Immunofluorescence (IF)

Product Details

Immunogen:	Recombinant protein corresponding to Mouse CSL
Cross-Reactivity:	Rat
Purification:	Affinity purification

Target Details

Target:	CSHL1
Alternative Name:	CSHL1/CSL (CSHL1 Products)
Background:	CSHL1 is a member of the somatotropin/prolactin family of hormones which play an important role in growth control. The protein encoded by this gene is a member of the somatotropin/prolactin family of hormones which play an important role in growth control. The gene, along with four other related genes, is located at the growth hormone locus on chromosome 17 where they are interspersed in the same transcriptional orientation, an

Target Details

arrangement which is thought to have evolved by a series of gene duplications. Although the five genes share a remarkably high degree of sequence identity, they are expressed selectively in different tissues. This particular family member is expressed in placental villi, although it was originally thought to be a pseudogene. In fact, alternative splicing suggests that the majority of the transcripts would be unable to express a secreted protein.

Gene ID: 66106

NCBI Accession: [NP_001239520](#)

UniProt: [Q9DC77](#)

Application Details

Application Notes: IHC/IF (M,R) 1:250-1:500/1:250-1:500

Restrictions: For Research Use only

Handling

Format: Liquid

Buffer: PBS, pH 7.4, 0.02 % sodium azide

Preservative: Sodium azide

Precaution of Use: This product contains Sodium azide: a POISONOUS AND HAZARDOUS SUBSTANCE which should be handled by trained staff only.

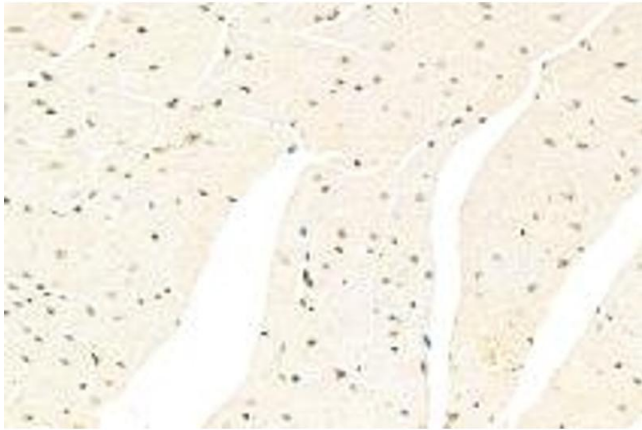
Storage: -20 °C

Images



Immunohistochemistry (Paraffin-embedded Sections)

Image 1. Immunohistochemistry analysis of paraffin-embedded rat muscle using CSL (ABIN7073486) at dilution of 1: 250



Immunohistochemistry (Paraffin-embedded Sections)

Image 2. Immunohistochemistry analysis of paraffin-embedded mouse heart using CSL (ABIN7073486) at dilution of 1: 500



Immunohistochemistry (Paraffin-embedded Sections)

Image 3. Immunohistochemistry analysis of paraffin-embedded mouse muscle using CSL (ABIN7073486) at dilution of 1: 500