

Datasheet for ABIN7073502

anti-BAAT1 antibody**3** Images[Go to Product page](#)

Overview

Quantity:	100 µL
Target:	BAAT1 (C7orf27)
Reactivity:	Mouse, Rat
Host:	Rabbit
Clonality:	Polyclonal
Conjugate:	This BAAT1 antibody is un-conjugated
Application:	Immunohistochemistry (IHC), Immunofluorescence (IF)

Product Details

Immunogen:	Recombinant protein corresponding to Mouse BAAT1
Cross-Reactivity:	Rat
Purification:	Affinity purification

Target Details

Target:	BAAT1 (C7orf27)
Alternative Name:	BAAT1 (C7orf27 Products)
Background:	BRCA1-associated ATM activator 1 encoded by ubiquitously expressed BRAT1 gene, interacts with the tumor suppressing BRCA1 (breast cancer 1) protein and the ATM (ataxia telangiectasia mutated) protein. The protein is required for activation of ATM following ionizing radiation and may act by regulating dephosphorylation of ATM. The protein is thought to play a role in the DNA damage pathway regulated by BRCA1 and ATM.

Target Details

Gene ID: 231841

NCBI Accession: [NP_001263216](#)

UniProt: [Q8C3R1](#)

Application Details

Application Notes: IHC/IF (M,R) 1:500-1:3500/1:250-1:500

Restrictions: For Research Use only

Handling

Format: Liquid

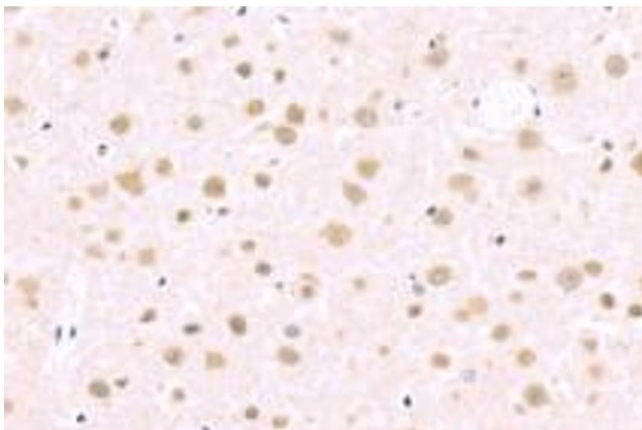
Buffer: PBS, pH 7.4, 0.02 % sodium azide

Preservative: Sodium azide

Precaution of Use: This product contains Sodium azide: a POISONOUS AND HAZARDOUS SUBSTANCE which should be handled by trained staff only.

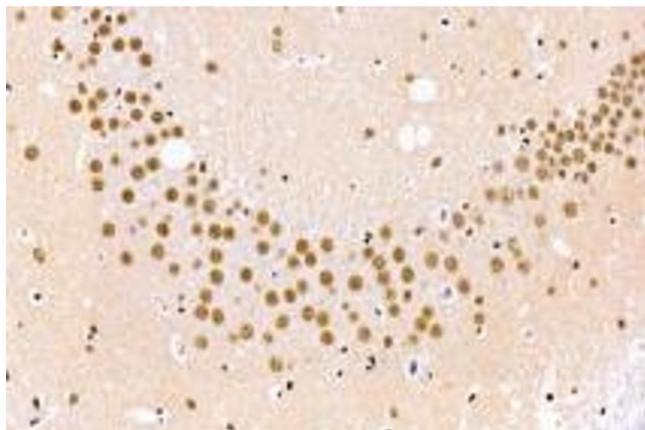
Storage: -20 °C

Images



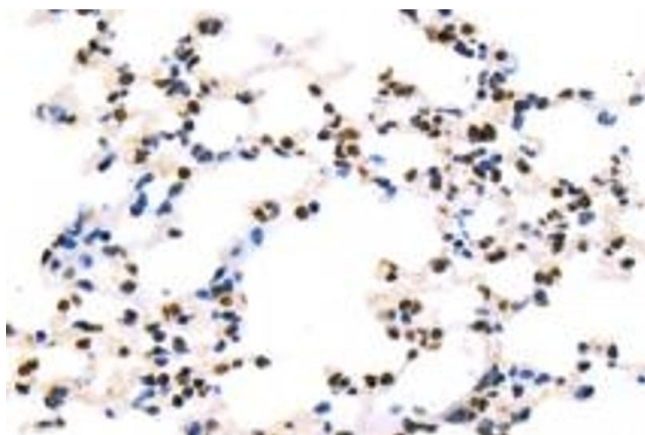
Immunohistochemistry (Paraffin-embedded Sections)

Image 1. Immunohistochemistry analysis of paraffin-embedded rat cerebral infarction using BAAT1 (ABIN7073502) at dilution of 1: 1000



Immunohistochemistry (Paraffin-embedded Sections)

Image 2. Immunohistochemistry analysis of paraffin-embedded mouse cerebral infarction using BAAT1 (ABIN7073502) at dilution of 1: 1000



Immunohistochemistry (Paraffin-embedded Sections)

Image 3. Immunohistochemistry analysis of paraffin-embedded mouse lung using BAAT1 (ABIN7073502) at dilution of 1: 1000