

Datasheet for ABIN7073514

anti-CLDN10 antibody

3 Images

[Go to Product page](#)

Overview

Quantity:	100 µL
Target:	CLDN10
Reactivity:	Rat
Host:	Rabbit
Clonality:	Polyclonal
Conjugate:	This CLDN10 antibody is un-conjugated
Application:	Immunohistochemistry (IHC), Immunofluorescence (IF)

Product Details

Immunogen:	KLH conjugated Synthetic peptide corresponding to Human Claudin 10
Cross-Reactivity:	Rat
Purification:	Affinity purification

Target Details

Target:	CLDN10
Alternative Name:	Claudin 10 (CLDN10 Products)
Background:	<p>Claudin-10 is a 228 amino acid multi-pass membrane protein that belongs to the claudin family and plays an important role in cell-adhesion activity and tight junction-specific events. The claudin superfamily consists of many structurally related proteins in humans. These proteins are important structural and functional components of tight junctions in paracellular transport. Claudins are located in both epithelial and endothelial cells in all tight junction-bearing tissues.</p>

Target Details

Claudins, which consist of four transmembrane domains and two extracellular loops, make up tight junction strands.

Gene ID: 58187

NCBI Accession: [NP_001153568](#)

UniProt: [Q9Z0S6](#)

Pathways: [Hepatitis C](#)

Application Details

Application Notes: IHC/IF (R) 1:800-1:2000/1:800-1:1600

Restrictions: For Research Use only

Handling

Format: Liquid

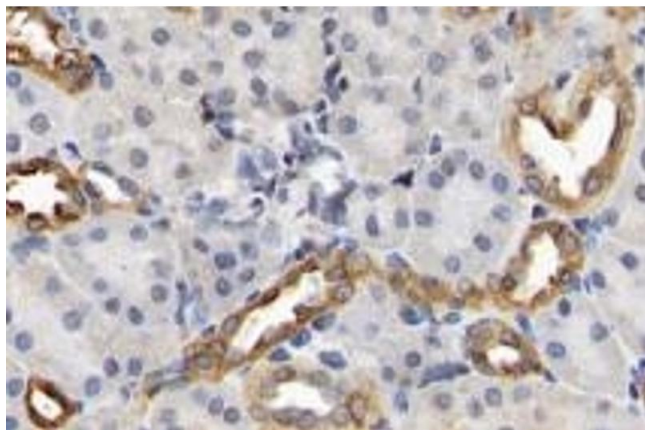
Buffer: PBS, pH 7.4, 0.02 % sodium azide

Preservative: Sodium azide

Precaution of Use: This product contains Sodium azide: a POISONOUS AND HAZARDOUS SUBSTANCE which should be handled by trained staff only.

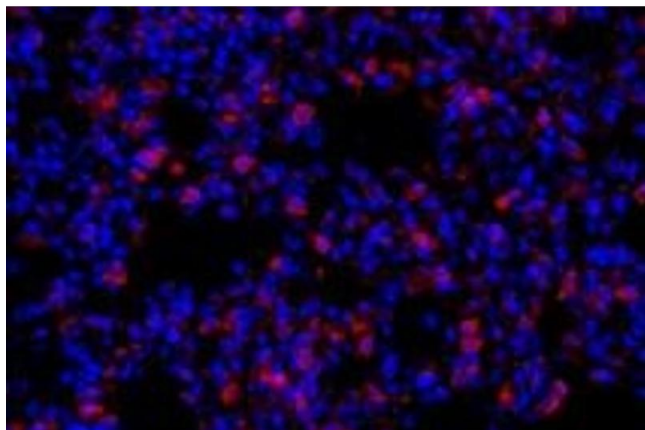
Storage: -20 °C

Images



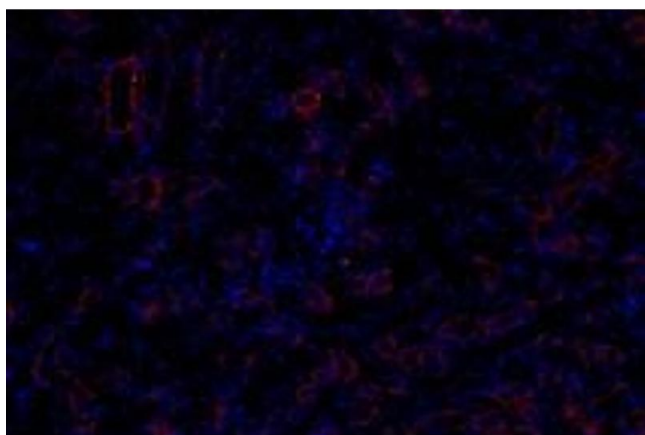
Immunohistochemistry (Paraffin-embedded Sections)

Image 1. Immunohistochemistry analysis of paraffin-embedded rat kidney using Claudin 10 (ABIN7073514) at dilution of 1: 2000



Immunofluorescence (fixed cells)

Image 2. Immunofluorescent analysis of paraformaldehyde-fixed rat lung using, Claudin 10 (ABIN7073514) at dilution of 1: 800



Immunofluorescence (fixed cells)

Image 3. Immunofluorescent analysis of paraformaldehyde-fixed rat kidney using, Claudin 10 (ABIN7073514) at dilution of 1:800