



[Go to Product page](#)

Datasheet for ABIN7073534  
**anti-CCDC111 antibody**

2 Images

### Overview

Quantity:	100 µL
Target:	CCDC111
Reactivity:	Human, Mouse, Rat
Host:	Rabbit
Clonality:	Polyclonal
Conjugate:	This CCDC111 antibody is un-conjugated
Application:	Immunohistochemistry (IHC), Immunofluorescence (IF), Western Blotting (WB)

### Product Details

Immunogen:	Recombinant protein corresponding to Mouse CCDC111
Cross-Reactivity:	Human, Rat
Purification:	Affinity purification

### Target Details

Target:	CCDC111
Alternative Name:	Coiled-coil domain-containing protein 111 ( <a href="#">CCDC111 Products</a> )
Background:	DNA primase and DNA polymerase required to tolerate replication-stalling lesions by bypassing them . Required to facilitate mitochondrial and nuclear replication fork progression by initiating de novo DNA synthesis using dNTPs and acting as an error-prone DNA polymerase able to bypass certain DNA lesions (By similarity). Shows a high capacity to tolerate DNA damage lesions such as 8oxoG and abasic sites in DNA .

## Target Details

Molecular Weight:	64 kDa
Gene ID:	408022
NCBI Accession:	<a href="#">NP_001001184</a>
UniProt:	<a href="#">Q6P1E7</a>

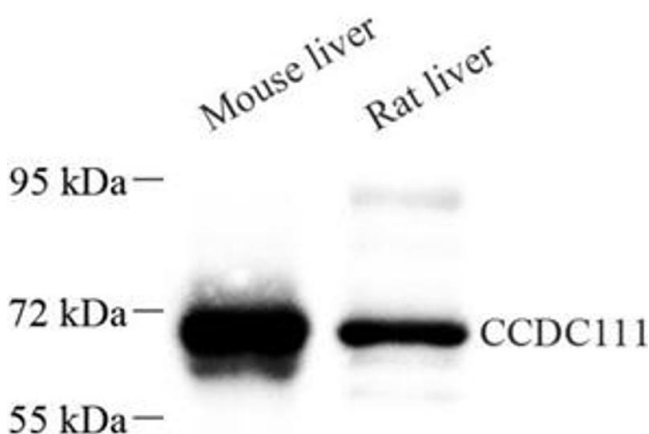
## Application Details

Application Notes:	WB (M,R) 1:500-1:1000, IHC/IF (H) 1:700-1:1400
Restrictions:	For Research Use only

## Handling

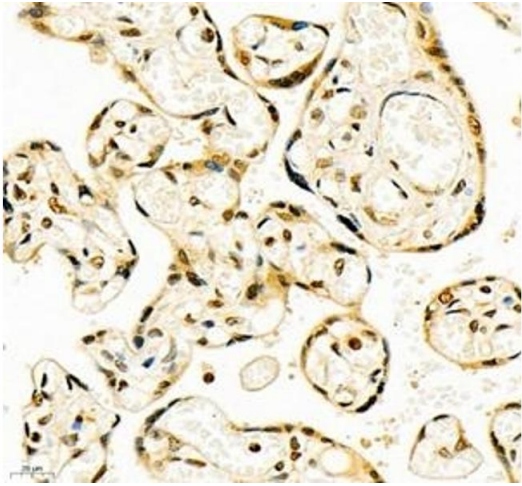
Format:	Liquid
Buffer:	PBS, pH 7.4, 0.02 % sodium azide
Preservative:	Sodium azide
Precaution of Use:	This product contains Sodium azide: a POISONOUS AND HAZARDOUS SUBSTANCE which should be handled by trained staff only.
Storage:	-20 °C

## Images



### Western Blotting

**Image 1.** Western blot analysis of CCDC111 (ABIN7073534) at dilution of 1: 500



### Immunohistochemistry (Paraffin-embedded Sections)

**Image 2.** Immunohistochemistry of paraffin embedded human placenta using CCDC111 (ABIN7073534) at dilution of 1:700 (400x lens)