

Datasheet for ABIN7073535  
**anti-CCDC147 antibody**



[Go to Product page](#)

5 Images

### Overview

Quantity:	100 µL
Target:	CCDC147
Reactivity:	Mouse, Rat
Host:	Rabbit
Clonality:	Polyclonal
Conjugate:	This CCDC147 antibody is un-conjugated
Application:	Western Blotting (WB), Immunofluorescence (IF), Immunohistochemistry (IHC)

### Product Details

Immunogen:	Recombinant protein corresponding to Mouse Cfap58
Cross-Reactivity:	Rat
Purification:	Affinity purification

### Target Details

Target:	CCDC147
Alternative Name:	Cfap58 ( <a href="#">CCDC147 Products</a> )
Background:	CFAP58 is a protein coding gene.
Molecular Weight:	104 kDa
Gene ID:	381229
NCBI Accession:	<a href="#">NP_001156739</a>

## Target Details

UniProt: [B2RW38](#)

## Application Details

Application Notes: WB (M,R) 1:500-1:1000, IHC/IF (M,R) 1:650-1:1300

Restrictions: For Research Use only

## Handling

Format: Liquid

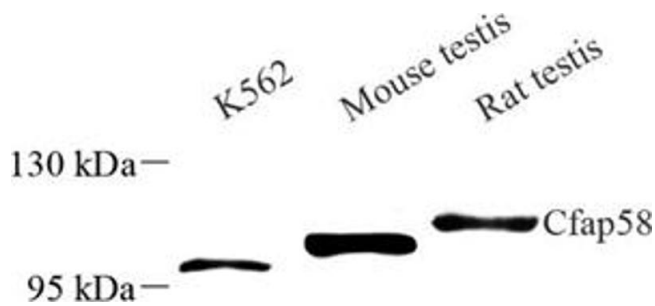
Buffer: PBS, pH 7.4, 0.02 % sodium azide

Preservative: Sodium azide

Precaution of Use: This product contains Sodium azide: a POISONOUS AND HAZARDOUS SUBSTANCE which should be handled by trained staff only.

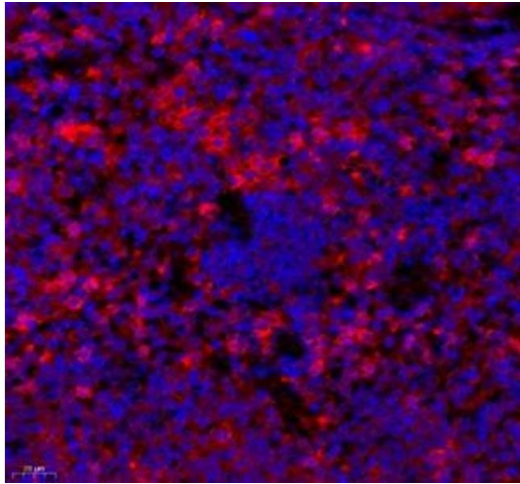
Storage: -20 °C

## Images



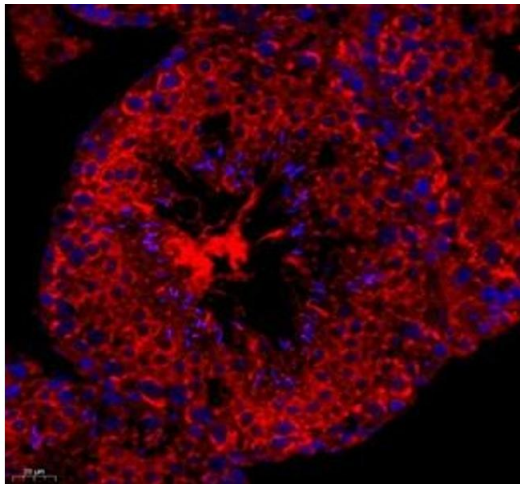
### Western Blotting

**Image 1.** Western blot analysis of Cfap58 (ABIN7073535) at dilution of 1: 500



#### Immunofluorescence (Paraffin-embedded Sections)

**Image 2.** Immunofluorescence of paraffin embedded mouse spleen using cfap58 (ABIN7073535) at dilution of 1: 650 (400x lens)



#### Immunofluorescence (Paraffin-embedded Sections)

**Image 3.** Immunofluorescence of paraffin embedded mouse spleen using cfap58 (ABIN7073535) at dilution of 1: 650 (400x lens)

Please check the [product details page](#) for more images. Overall 5 images are available for ABIN7073535.