

Datasheet for ABIN7073536

## anti-CCDC30 antibody



[Go to Product page](#)

### 1 Image

#### Overview

Quantity:	100 µL
Target:	CCDC30
Reactivity:	Mouse
Host:	Rabbit
Clonality:	Polyclonal
Conjugate:	This CCDC30 antibody is un-conjugated
Application:	Western Blotting (WB)

#### Product Details

Immunogen:	Recombinant protein corresponding to Mouse CCDC30
Purification:	Affinity purification

#### Target Details

Target:	CCDC30
Alternative Name:	CCDC30 ( <a href="#">CCDC30 Products</a> )
Background:	CCDC30 is a protein coding gene.
Molecular Weight:	95 kDa
Gene ID:	73332
NCBI Accession:	<a href="#">NP_001257364</a>
UniProt:	<a href="#">Q8BVF4</a>

## Application Details

Application Notes: WB (M) 1:500-1:1000

Restrictions: For Research Use only

## Handling

Format: Liquid

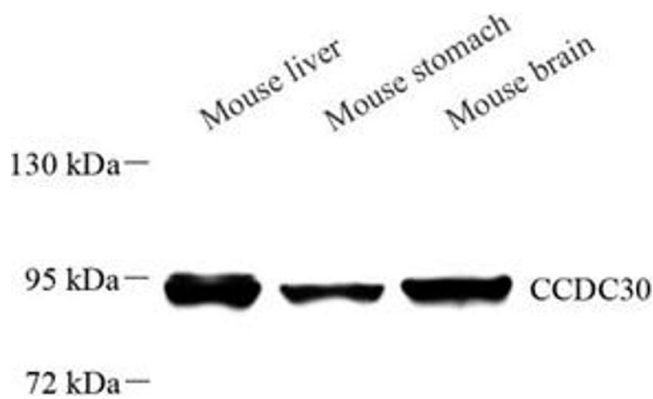
Buffer: PBS, pH 7.4, 0.02 % sodium azide

Preservative: Sodium azide

Precaution of Use: This product contains Sodium azide: a POISONOUS AND HAZARDOUS SUBSTANCE which should be handled by trained staff only.

Storage: -20 °C

## Images



### Western Blotting

**Image 1.** Western blot analysis of CCDC30 (ABIN7073536) at dilution of 1: 500