

Datasheet for ABIN7073547
anti-Collagen Type V antibody

6 Images

[Go to Product page](#)

Overview

Quantity:	100 µL
Target:	Collagen Type V (COL5)
Reactivity:	Rat, Mouse
Host:	Rabbit
Clonality:	Polyclonal
Conjugate:	This Collagen Type V antibody is un-conjugated
Application:	Western Blotting (WB), Immunohistochemistry (IHC), Immunofluorescence (IF)

Product Details

Immunogen:	KLH conjugated Synthetic peptide corresponding to Mouse Collagen V
Cross-Reactivity:	Rat
Purification:	Affinity purification

Target Details

Target:	Collagen Type V (COL5)
Alternative Name:	Collagen V (COL5 Products)
Background:	<p>COL5A1 encodes an alpha chain for one of the low abundance fibrillar collagens. Fibrillar collagen molecules are trimers that can be composed of one or more types of alpha chains. Type V collagen is found in tissues containing type I collagen and appears to regulate the assembly of heterotypic fibers composed of both type I and type V collagen. COL5A1 product is closely related to type XI collagen and it is possible that the collagen chains of types V and XI</p>

Target Details

constitute a single collagen type with tissue-specific chain combinations. Mutations in this gene are associated with Ehlers-Danlos syndrome, types I and II.

Molecular Weight:	184 kDa
Gene ID:	12831
NCBI Accession:	NP_056549
UniProt:	O88207

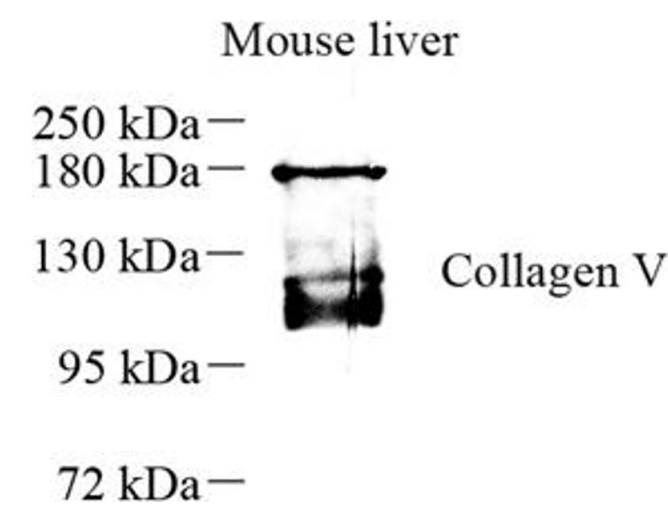
Application Details

Application Notes:	WB (M,R) 1: 500-1: 1000, IHC/IF (M,R) 1:1500-1:3000/1:750-1:1500
Restrictions:	For Research Use only

Handling

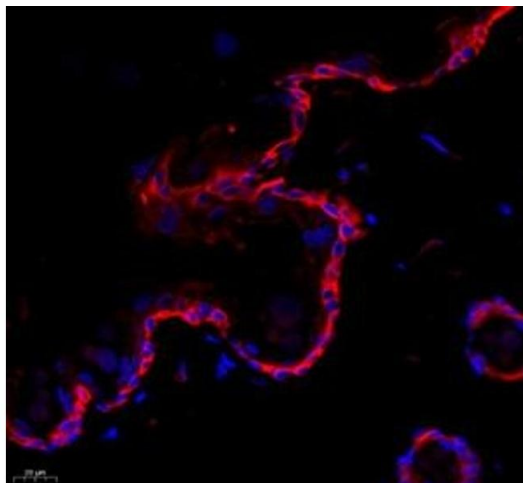
Format:	Liquid
Buffer:	PBS, pH 7.4, 0.02 % sodium azide
Preservative:	Sodium azide
Precaution of Use:	This product contains Sodium azide: a POISONOUS AND HAZARDOUS SUBSTANCE which should be handled by trained staff only.
Storage:	-20 °C

Images



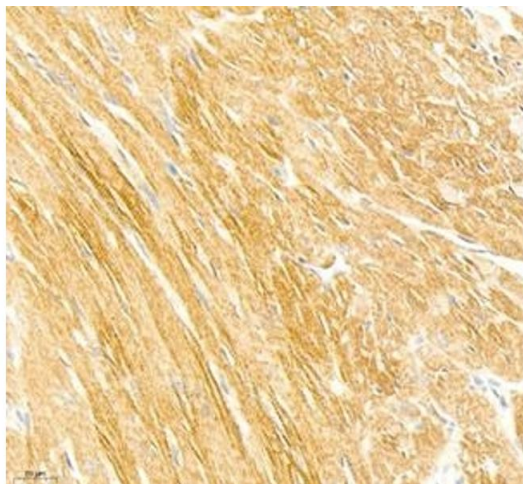
Western Blotting

Image 1. Western blot analysis of collagen alpha-1 (V) (ABIN7073547) at dilution of 1: 500



Immunofluorescence (Paraffin-embedded Sections)

Image 2. Immunofluorescence of paraffin embedded rat skin using collagen alpha-1 (V) (ABIN7073547) at dilution of 1: 1500 (400x lens)



Immunohistochemistry (Paraffin-embedded Sections)

Image 3. Immunohistochemistry of paraffin embedded mouse heart using collagen alpha-1 (V) (ABIN7073547) at dilution of 1: 1800 (400x lens)

Please check the [product details page](#) for more images. Overall 6 images are available for ABIN7073547.