



[Go to Product page](#)

Datasheet for ABIN7073549

anti-COL10 antibody

2 Images

Overview

Quantity:	100 µL
Target:	COL10
Reactivity:	Human
Host:	Rabbit
Clonality:	Polyclonal
Conjugate:	This COL10 antibody is un-conjugated
Application:	Immunohistochemistry (IHC), Immunofluorescence (IF)

Product Details

Immunogen:	KLH conjugated Synthetic peptide corresponding to Human Collagen X
Purification:	Affinity purification

Target Details

Target:	COL10
Alternative Name:	Collagen X (COL10 Products)
Background:	This gene encodes the alpha chain of type X collagen, a short chain collagen expressed by hypertrophic chondrocytes during endochondral ossification. Unlike type VIII collagen, the other short chain collagen, type X collagen is a homotrimer. Mutations in this gene are associated with Schmid type metaphyseal chondro dysplasia (SMCD) and Japanese type spondylometaphyseal dysplasia (SMD).
Gene ID:	1300

Target Details

NCBI Accession: [NP_000484](#)

UniProt: [Q03692](#)

Application Details

Application Notes: IHC/IF (H) 1:2000-1:4000/1:1000-1:2000

Restrictions: For Research Use only

Handling

Format: Liquid

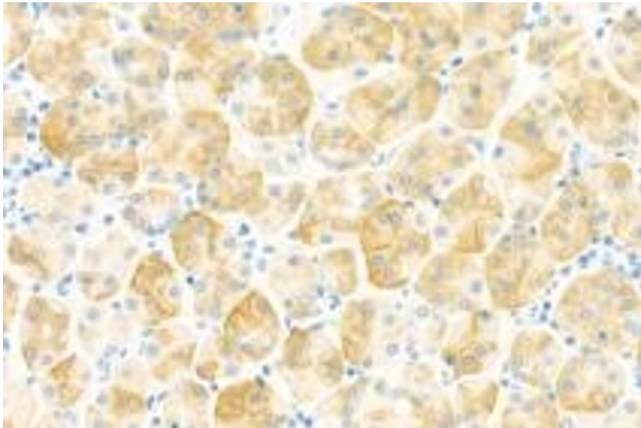
Buffer: PBS, pH 7.4, 0.02 % sodium azide

Preservative: Sodium azide

Precaution of Use: This product contains Sodium azide: a POISONOUS AND HAZARDOUS SUBSTANCE which should be handled by trained staff only.

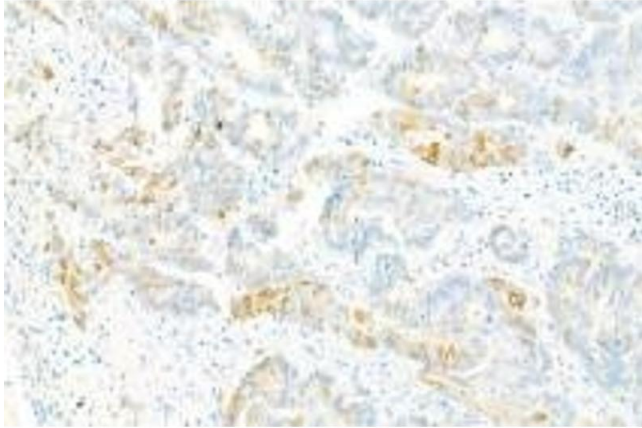
Storage: -20 °C

Images



Immunohistochemistry (Paraffin-embedded Sections)

Image 1. Immunohistochemistry analysis of paraffin-embedded Human stomach using Collagen X (ABIN7073549) at dilution of 1: 2000



Immunohistochemistry (Paraffin-embedded Sections)

Image 2. Immunohistochemistry analysis of paraffin-embedded Human ovarian cancer using Collagen X (ABIN7073549) at dilution of 1: 2000