

Datasheet for ABIN7073552

**anti-COLEC12 antibody**

5 Images

[Go to Product page](#)

## Overview

Quantity:	100 µL
Target:	COLEC12
Reactivity:	Mouse, Rat
Host:	Rabbit
Clonality:	Polyclonal
Conjugate:	This COLEC12 antibody is un-conjugated
Application:	Immunohistochemistry (IHC), Immunofluorescence (IF)

## Product Details

Immunogen:	Recombinant protein corresponding to Mouse Colec12
Cross-Reactivity:	Rat
Purification:	Affinity purification

## Target Details

Target:	COLEC12
Alternative Name:	Colec12 ( <a href="#">COLEC12 Products</a> )
Background:	This gene encodes a member of the C-lectin family, proteins that possess collagen-like sequences and carbohydrate recognition domains. This protein is a scavenger receptor, a cell surface glycoprotein that displays several functions associated with host defense. It can bind to carbohydrate antigens on microorganisms, facilitating their recognition and removal. It also mediates the recognition, internalization, and degradation of oxidatively modified low density

## Target Details

	lipoprotein by vascular endothelial cells.
Gene ID:	140792
NCBI Accession:	<a href="#">NP_569716</a>
UniProt:	<a href="#">Q8K4Q8</a>
Pathways:	<a href="#">Activation of Innate immune Response</a>

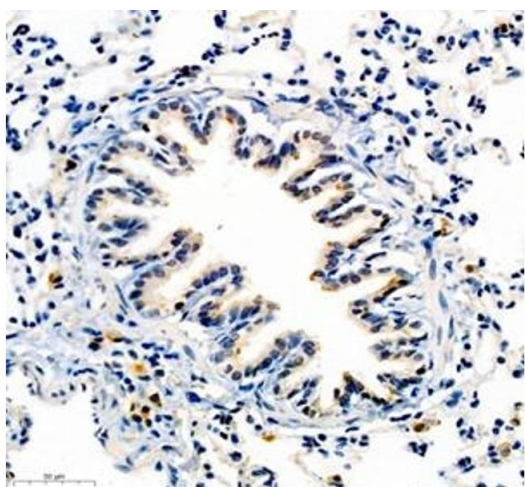
## Application Details

Application Notes:	IHC/IF (M,R) 1:500-1:1500/1:500-1:1300
Restrictions:	For Research Use only

## Handling

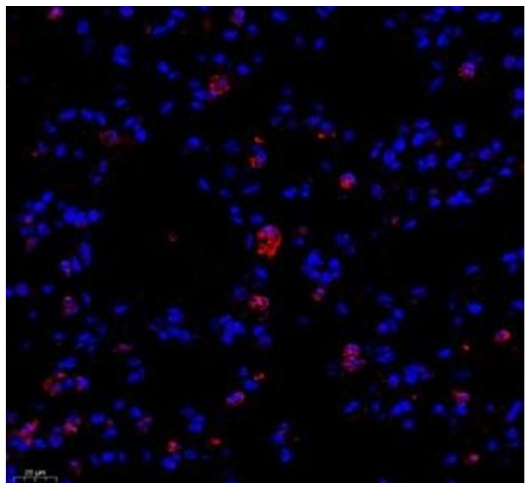
Format:	Liquid
Buffer:	PBS, pH 7.4, 0.02 % sodium azide
Preservative:	Sodium azide
Precaution of Use:	This product contains Sodium azide: a POISONOUS AND HAZARDOUS SUBSTANCE which should be handled by trained staff only.
Storage:	-20 °C

## Images



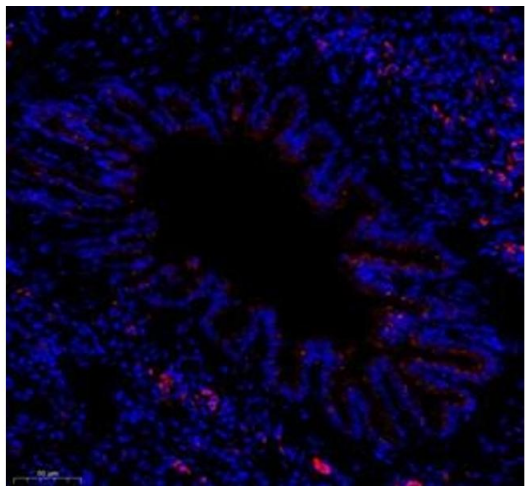
### Immunohistochemistry (Paraffin-embedded Sections)

**Image 1.** Immunohistochemistry of paraffin embedded rat lung using COLEC12 (ABIN7073552) at dilution of 1:700 (300x lens)



#### Immunofluorescence (Paraffin-embedded Sections)

**Image 2.** Immunofluorescence of paraffin embedded mouse lung using colEC12 (ABIN7073552) at dilution of 1:650 (400x lens)



#### Immunofluorescence (Paraffin-embedded Sections)

**Image 3.** Immunofluorescence of paraffin embedded rat lung using colEC12 (ABIN7073552) at dilution of 1:650 (250x lens)

Please check the [product details page](#) for more images. Overall 5 images are available for ABIN7073552.