

Datasheet for ABIN7073561

**anti-C1QL2 antibody**

3 Images

[Go to Product page](#)

## Overview

Quantity:	100 µL
Target:	C1QL2
Reactivity:	Mouse, Rat
Host:	Rabbit
Clonality:	Polyclonal
Conjugate:	This C1QL2 antibody is un-conjugated
Application:	Western Blotting (WB), Immunohistochemistry (IHC), Immunofluorescence (IF)

## Product Details

Immunogen:	Recombinant protein corresponding to Mouse C1QL2
Cross-Reactivity:	Rat
Purification:	Affinity purification

## Target Details

Target:	C1QL2
Alternative Name:	C1QL2 ( <a href="#">C1QL2 Products</a> )
Background:	C1qL2, also known as CTRP10 or C1QTNF10, is a 287 amino acid secreted protein that contains one C1q domain and one collagen-like domain. C1qL2 belongs to a large family of multimeric proteins with a signature globular domain homologous to C1QA. These proteins also share structural homology with TNF family members. The gene that encodes C1qL2 consists of approximately 2,653 bases and maps to human chromosome 2q14.2.

### Target Details

Molecular Weight:	38 kDa
Gene ID:	226359
NCBI Accession:	<a href="#">NP_997116</a>
UniProt:	<a href="#">Q8CFR0</a>

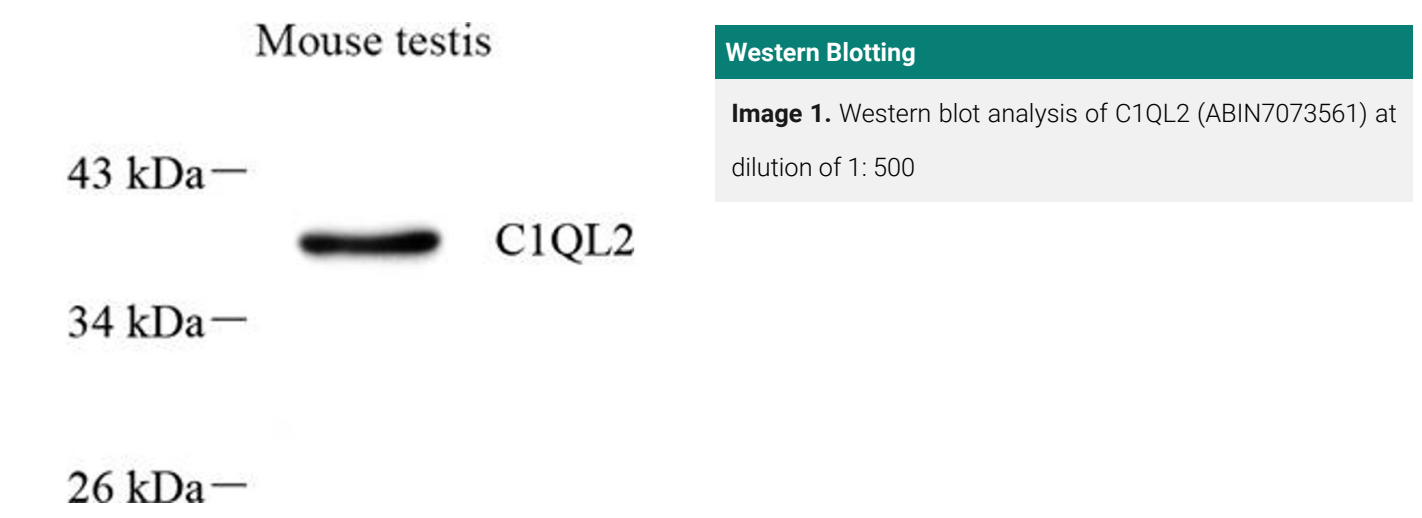
### Application Details

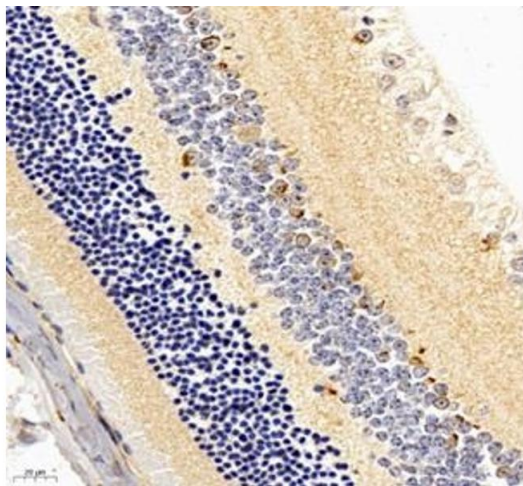
Application Notes:	WB (M) 1:500-1:1000, IHC/IF (M,R) 1:1000-1:2000
Restrictions:	For Research Use only

### Handling

Format:	Liquid
Buffer:	PBS, pH 7.4, 0.02 % sodium azide
Preservative:	Sodium azide
Precaution of Use:	This product contains Sodium azide: a POISONOUS AND HAZARDOUS SUBSTANCE which should be handled by trained staff only.
Storage:	-20 °C

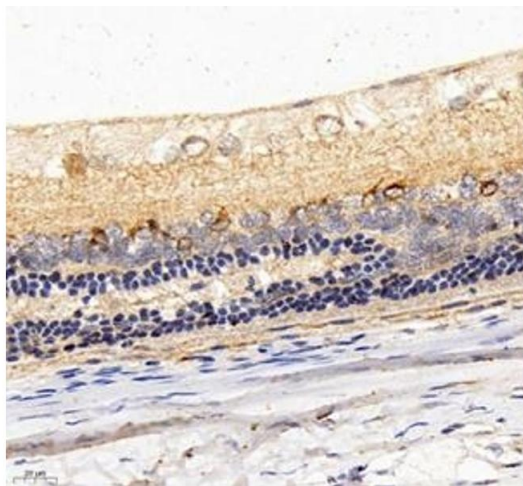
### Images





#### Immunohistochemistry (Paraffin-embedded Sections)

**Image 2.** Immunohistochemistry of paraffin embedded mouse eye using C1QL2 (ABIN7073561) at dilution of 1: 1000 (400x lens)



#### Immunohistochemistry (Paraffin-embedded Sections)

**Image 3.** Immunohistochemistry of paraffin embedded rat eye using C1QL2 (ABIN7073561) at dilution of 1: 1000 (400x lens)