

Datasheet for ABIN7073563

anti-CD35 antibody**3** Images[Go to Product page](#)

Overview

Quantity:	100 µL
Target:	CD35 (CR1)
Reactivity:	Human, Mouse, Rat
Host:	Rabbit
Clonality:	Polyclonal
Conjugate:	This CD35 antibody is un-conjugated
Application:	Western Blotting (WB), Immunofluorescence (IF), Immunohistochemistry (IHC)

Product Details

Immunogen:	KLH conjugated Synthetic peptide corresponding to Human CD35
Cross-Reactivity:	Mouse, Rat
Purification:	Affinity purification

Target Details

Target:	CD35 (CR1)
Alternative Name:	CD35 (CR1 Products)
Background:	This gene is a member of the receptors of complement activation (RCA) family and is located in the 'cluster RCA' region of chromosome 1. The gene encodes a monomeric single-pass type I membrane glycoprotein found on erythrocytes, leukocytes, glomerular podocytes, and splenic follicular dendritic cells. The Knops blood group system is a system of antigens located on this protein. The protein mediates cellular binding to particles and immune complexes that have

Target Details

activated complement. Decreases in expression of this protein and/or mutations in its gene have been associated with gallbladder carcinomas, mesangiocapillary glomerulonephritis, systemic lupus erythematosus and sarcoidosis.

Molecular Weight: 224 kDa

Gene ID: 1378

NCBI Accession: [NP_000564](#)

UniProt: [P17927](#)

Pathways: [Complement System](#), [Regulation of Leukocyte Mediated Immunity](#), [Positive Regulation of Endopeptidase Activity](#)

Application Details

Application Notes: WB (M,R) 1:500-1:1000, IHC/IF (H,R) 1:650-1:1300

Restrictions: For Research Use only

Handling

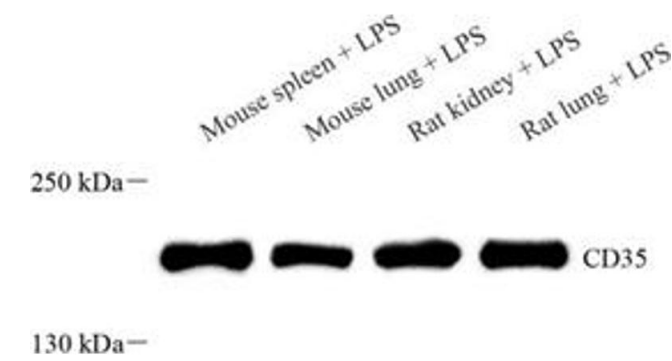
Format: Liquid

Buffer: PBS, pH 7.4, 0.02 % sodium azide

Preservative: Sodium azide

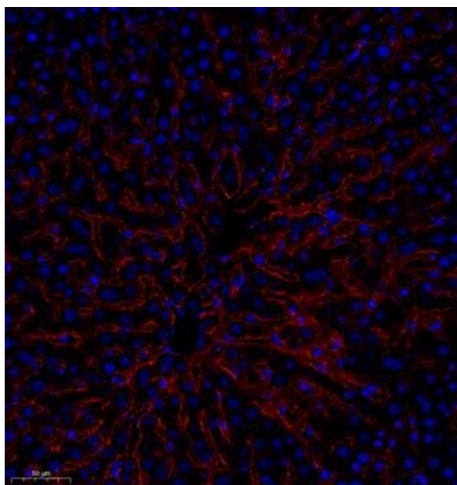
Precaution of Use: This product contains Sodium azide: a POISONOUS AND HAZARDOUS SUBSTANCE which should be handled by trained staff only.

Storage: -20 °C



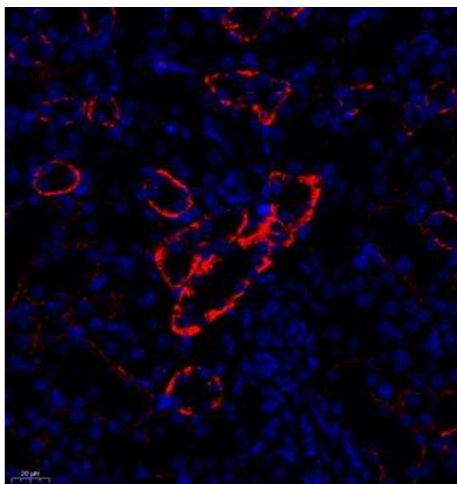
Western Blotting

Image 1. Western blot analysis of CD35 (ABIN7073563), at dilution of 1: 1000



Immunofluorescence (Paraffin-embedded Sections)

Image 2. Immunofluorescence analysis of paraffin embedded human liver using CD35 (ABIN7073563) at dilution of 1: 650



Immunofluorescence (Paraffin-embedded Sections)

Image 3. Immunofluorescence analysis of paraffin embedded rat nephritis using CD35 (ABIN7073563) at dilution of 1: 650