

Datasheet for ABIN7073576
anti-Contactin 6 antibody[Go to Product page](#)

1 Image

Overview

Quantity:	100 µL
Target:	Contactin 6 (CNTN6)
Reactivity:	Rat
Host:	Rabbit
Clonality:	Polyclonal
Conjugate:	This Contactin 6 antibody is un-conjugated
Application:	Immunohistochemistry (IHC), Immunofluorescence (IF)

Product Details

Immunogen:	Recombinant protein corresponding to Mouse Contactin 6
Cross-Reactivity:	Rat
Purification:	Affinity purification

Target Details

Target:	Contactin 6 (CNTN6)
Alternative Name:	Contactin 6 (CNTN6 Products)
Background:	The protein encoded by this gene is a member of the immunoglobulin superfamily. It is a glycosylphosphatidylinositol (GPI)-anchored neuronal membrane protein that functions as a cell adhesion molecule. It may play a role in the formation of axon connections in the developing nervous system. Alternative splicing results in multiple transcript variants.
Gene ID:	53870

Target Details

UniProt: [Q9JMB8](#)

Application Details

Application Notes: IHC/IF (R) 1:200-1:800

Restrictions: For Research Use only

Handling

Format: Liquid

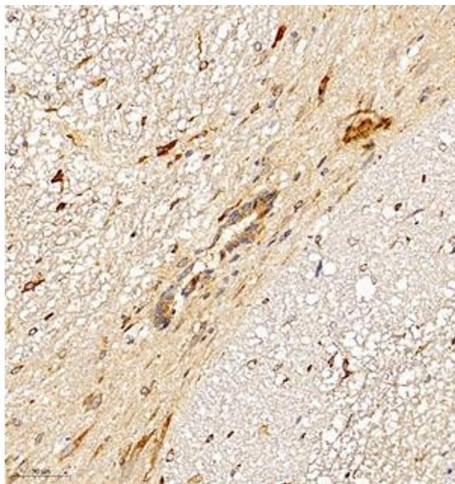
Buffer: PBS, pH 7.4, 0.02 % sodium azide

Preservative: Sodium azide

Precaution of Use: This product contains Sodium azide: a POISONOUS AND HAZARDOUS SUBSTANCE which should be handled by trained staff only.

Storage: -20 °C

Images



Immunohistochemistry (Paraffin-embedded Sections)

Image 1. Immunohistochemistry of paraffin embedded rat spinal cord using CNTN6 (ABIN7073576) at dilution of 1:350 (250x lens)