

Datasheet for ABIN7073590

anti-CRTC1 antibody

3 Images

[Go to Product page](#)

Overview

| | |
|--------------|-----------------------------------------------------|
| Quantity: | 100 µL |
| Target: | CRTC1 |
| Reactivity: | Mouse, Rat |
| Host: | Rabbit |
| Clonality: | Polyclonal |
| Conjugate: | This CRTC1 antibody is un-conjugated |
| Application: | Immunohistochemistry (IHC), Immunofluorescence (IF) |

Product Details

| | |
|-------------------|---------------------------------------------------------------|
| Immunogen: | KLH conjugated Synthetic peptide corresponding to Mouse TORC1 |
| Cross-Reactivity: | Rat |
| Purification: | Affinity purification |

Target Details

| | |
|-------------------|----------------------------------------------------------------------------------------------------------------------------------------------------------------------------------------------------------------------------------------------------------------------------------------------------------------------------------------------------------------------------------------------------------------------------------------------------------------|
| Target: | CRTC1 |
| Alternative Name: | TORC1 (CRTC1 Products) |
| Background: | CRTC1, also named as MECT1, TORC1, and WAMTP1, belongs to the TORC family. It is a transcriptional coactivator for CREB1 which activates transcription through both consensus and variant cAMP response element (CRE) sites. CRTC1 acts as a coactivator, in the SIK/TORC signaling pathway, being active when dephosphorylated and acts independently of CREB1 'Ser-133' phosphorylation. It enhances the interaction of CREB1 with TAF4. CRTC1 regulates the |

Target Details

expression of specific CREB-activated genes such as the steroidogenic gene, StAR. It is a potent coactivator of PGC1alpha and inducer of mitochondrial biogenesis in muscle cells.

Gene ID: 382056

NCBI Accession: [NP_001004062](#)

UniProt: [Q68ED7](#)

Application Details

Application Notes: IHC/IF (M,R) 1:400-1:800

Restrictions: For Research Use only

Handling

Format: Liquid

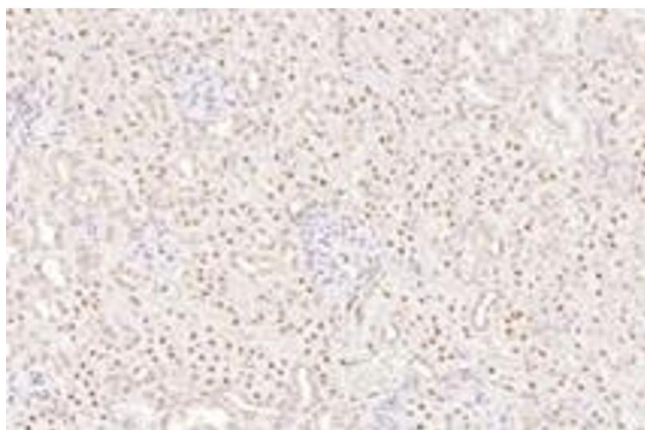
Buffer: PBS, pH 7.4, 0.02 % sodium azide

Preservative: Sodium azide

Precaution of Use: This product contains Sodium azide: a POISONOUS AND HAZARDOUS SUBSTANCE which should be handled by trained staff only.

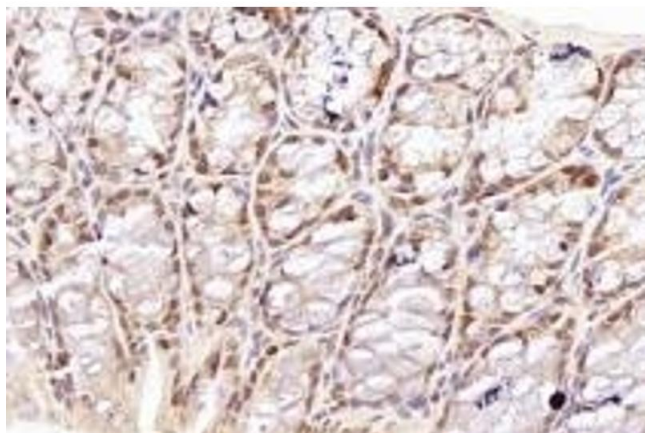
Storage: -20 °C

Images



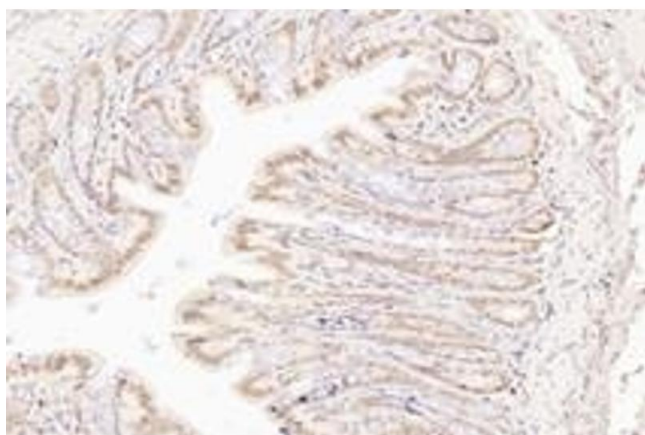
Immunohistochemistry (Paraffin-embedded Sections)

Image 1. Immunohistochemistry analysis of paraffin-embedded rat kidney using TORC1 (ABIN7073590) at dilution of 1: 800



Immunohistochemistry (Paraffin-embedded Sections)

Image 2. Immunohistochemistry analysis of paraffin-embedded mouse colon using TORC1 (ABIN7073590) at dilution of 1: 800



Immunohistochemistry (Paraffin-embedded Sections)

Image 3. Immunohistochemistry analysis of paraffin-embedded rat colon using TORC1 (ABIN7073590) at dilution of 1: 800