



[Go to Product page](#)

Datasheet for ABIN7073608

anti-CNGA1 antibody

4 Images

Overview

Quantity:	100 µL
Target:	CNGA1
Reactivity:	Rat, Mouse
Host:	Rabbit
Clonality:	Polyclonal
Conjugate:	This CNGA1 antibody is un-conjugated
Application:	Immunohistochemistry (IHC), Immunofluorescence (IF)

Product Details

Immunogen:	Recombinant protein corresponding to Mouse CNGA1
Cross-Reactivity:	Rat
Purification:	Affinity purification

Target Details

Target:	CNGA1
Alternative Name:	CNGA1 (CNGA1 Products)
Background:	Subunit of the rod cyclic GMP-gated cation channel, which is involved in the final stage of the phototransduction pathway. When light hits rod photoreceptors, cGMP concentrations decrease causing rapid closure of CNGA1/CNGB1 channels and, therefore, hyperpolarization of the membrane potential.
Gene ID:	12788

Target Details

NCBI Accession:	NP_031749
UniProt:	P29974
Pathways:	Regulation of G-Protein Coupled Receptor Protein Signaling , Phototransduction , Asymmetric Protein Localization

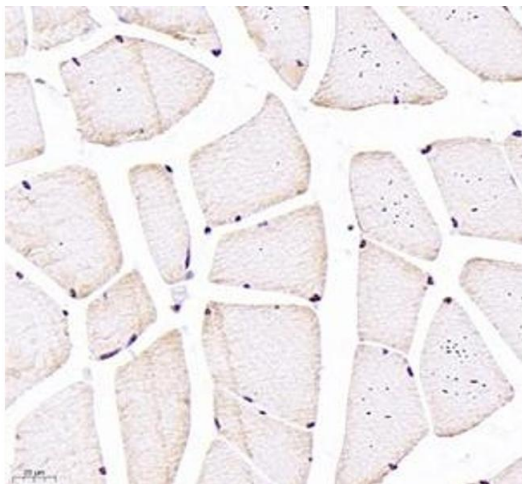
Application Details

Application Notes:	IHC/IF (M,R) 1:700-1:1400/1:700-1:1400
Restrictions:	For Research Use only

Handling

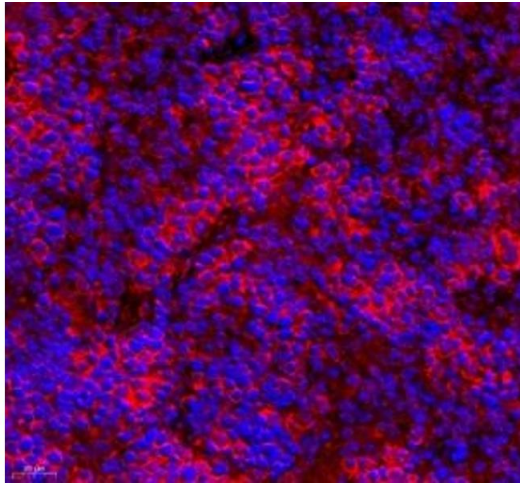
Format:	Liquid
Buffer:	PBS, pH 7.4, 0.02 % sodium azide
Preservative:	Sodium azide
Precaution of Use:	This product contains Sodium azide: a POISONOUS AND HAZARDOUS SUBSTANCE which should be handled by trained staff only.
Storage:	-20 °C

Images



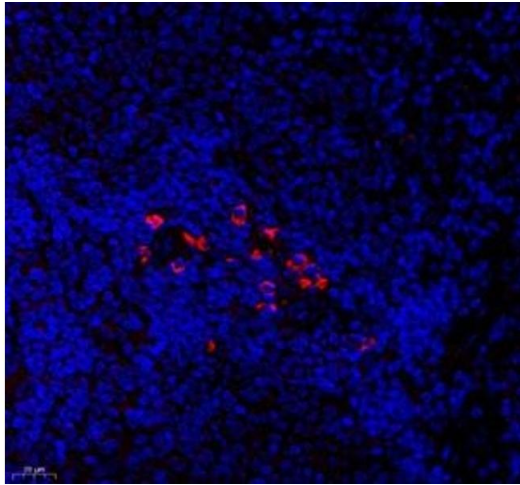
Immunohistochemistry (Paraffin-embedded Sections)

Image 1. Immunohistochemistry of paraffin embedded rat skeletal muscle using CNG1 (ABIN7073608) at dilution of 1:700 (400x lens)



Immunofluorescence (Paraffin-embedded Sections)

Image 2. Immunofluorescence of paraffin embedded mouse spleen using CNG1 (ABIN7073608) at dilution of 1:700 (400x lens)



Immunofluorescence (Paraffin-embedded Sections)

Image 3. Immunofluorescence of paraffin embedded rat spleen using CNG1 (ABIN7073608) at dilution of 1:700 (400x lens)

Please check the [product details page](#) for more images. Overall 4 images are available for ABIN7073608.