

Datasheet for ABIN7073658

anti-Cytochrome B Reductase 1 antibody[Go to Product page](#)**1** Image

Overview

Quantity:	100 µL
Target:	Cytochrome B Reductase 1 (CYBRD1)
Reactivity:	Mouse, Rat
Host:	Rabbit
Clonality:	Polyclonal
Conjugate:	This Cytochrome B Reductase 1 antibody is un-conjugated
Application:	Western Blotting (WB)

Product Details

Immunogen:	KLH conjugated Synthetic peptide corresponding to Mouse Cytochrome b reductase 1/DCYT
Cross-Reactivity:	Rat
Purification:	Affinity purification

Target Details

Target:	Cytochrome B Reductase 1 (CYBRD1)
Alternative Name:	Cytochrome b reductase 1/DCYTB (CYBRD1 Products)
Background:	Ferric-chelate reductase that reduces Fe(3+) to Fe(2+). Present at the brush border of duodenal enterocytes where it probably reduces dietary Fe(3+) thereby facilitating its transport into the mucosal cells. Uses ascorbate as electron donor. May be involved in extracellular ascorbate recycling in erythrocyte membranes. May also act as a ferrireductase in airway epithelial cells.
Molecular Weight:	40 kDa

Target Details

Gene ID:	73649
NCBI Accession:	NP_082869
UniProt:	Q925G2
Pathways:	Transition Metal Ion Homeostasis

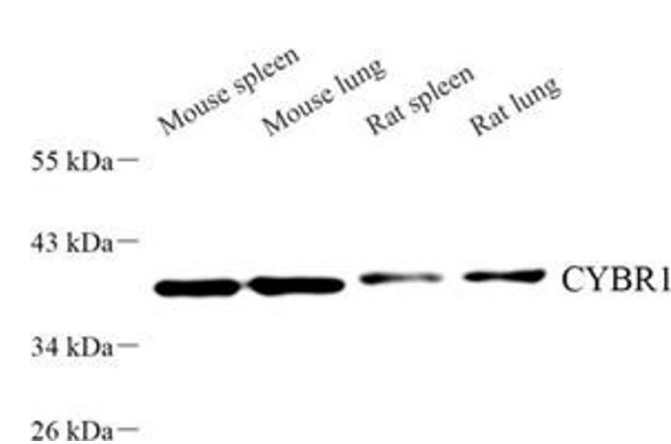
Application Details

Application Notes:	WB (M,R) 1:500-1:1000
Restrictions:	For Research Use only

Handling

Format:	Liquid
Buffer:	PBS, pH 7.4, 0.02 % sodium azide
Preservative:	Sodium azide
Precaution of Use:	This product contains Sodium azide: a POISONOUS AND HAZARDOUS SUBSTANCE which should be handled by trained staff only.
Storage:	-20 °C

Images



Western Blotting

Image 1. Western blot analysis of CYBR1 (ABIN7073658) at dilution of 1: 500