



Datasheet for ABIN7073661 anti-CYB561 antibody



[Go to Product page](#)

3 Images

Overview

Quantity:	100 µL
Target:	CYB561
Reactivity:	Rat
Host:	Rabbit
Clonality:	Polyclonal
Conjugate:	This CYB561 antibody is un-conjugated
Application:	Immunofluorescence (IF), Immunohistochemistry (IHC)

Product Details

Immunogen:	Recombinant protein corresponding to Mouse Pyruvate Dehydrogenase E2
Cross-Reactivity:	Rat
Purification:	Affinity purification

Target Details

Target:	CYB561
Alternative Name:	Pyruvate Dehydrogenase E2 (CYB561 Products)
Background:	This gene encodes component E2 of the multi-enzyme pyruvate dehydrogenase complex (PDC). PDC resides in the inner mitochondrial membrane and catalyzes the conversion of pyruvate to acetyl coenzyme A. The protein product of this gene, dihydrolipoamide acetyltransferase, accepts acetyl groups formed by the oxidative decarboxylation of pyruvate and transfers them to coenzyme A. Dihydrolipoamide acetyltransferase is the antigen for

Target Details

antimitochondrial antibodies. These autoantibodies are present in nearly 95 % of patients with the autoimmune liver disease primary biliary cirrhosis (PBC). In PBC, activated T lymphocytes attack and destroy epithelial cells in the bile duct where this protein is abnormally distributed and overexpressed. PBC eventually leads to cirrhosis and liver failure.

Gene ID: 235339

UniProt: [Q8BMF4](#)

Application Details

Application Notes: IHC/IF (R) 1:500-1:1000

Restrictions: For Research Use only

Handling

Format: Liquid

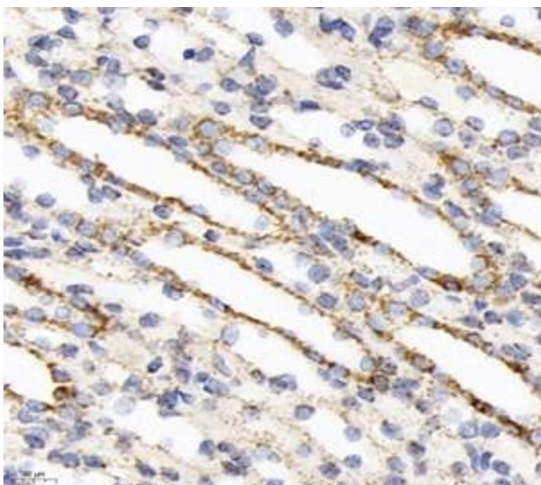
Buffer: PBS, pH 7.4, 0.02 % sodium azide

Preservative: Sodium azide

Precaution of Use: This product contains Sodium azide: a POISONOUS AND HAZARDOUS SUBSTANCE which should be handled by trained staff only.

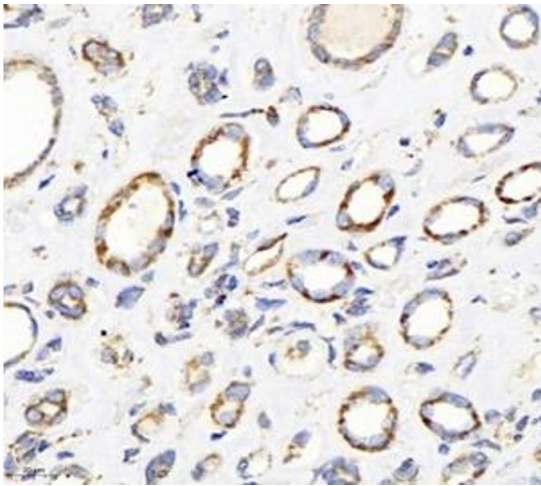
Storage: -20 °C

Images



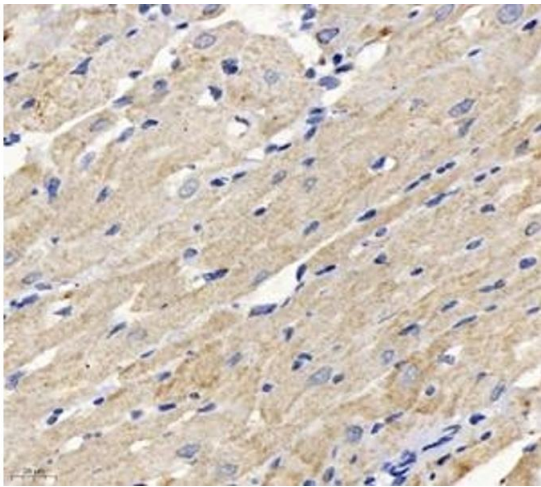
Immunohistochemistry (Paraffin-embedded Sections)

Image 1. Immunohistochemistry analysis of paraffin-embedded rat kidney using DLAT (ABIN7073661) at dilution of 1: 1000



Immunohistochemistry (Paraffin-embedded Sections)

Image 2. Immunohistochemistry analysis of paraffin-embedded human kidney using,DLAT (ABIN7073661) at dilution of 1: 1000



Immunohistochemistry (Paraffin-embedded Sections)

Image 3. Immunohistochemistry analysis of paraffin-embedded rat heart using,DLAT (ABIN7073661) at dilution of 1: 1000