



Datasheet for ABIN7073673 anti-CYP2S1 antibody



[Go to Product page](#)

2 Images

Overview

Quantity:	100 µL
Target:	CYP2S1
Reactivity:	Mouse, Rat
Host:	Rabbit
Clonality:	Polyclonal
Conjugate:	This CYP2S1 antibody is un-conjugated
Application:	Immunohistochemistry (IHC), Immunofluorescence (IF)

Product Details

Immunogen:	Recombinant protein corresponding to Mouse CYP2S1
Cross-Reactivity:	Rat
Purification:	Affinity purification

Target Details

Target:	CYP2S1
Alternative Name:	CYP2S1 (CYP2S1 Products)
Background:	This gene encodes a member of the cytochrome P450 superfamily of enzymes. The cytochrome P450 proteins are monooxygenases which catalyze many reactions involved in drug metabolism and synthesis of cholesterol, steroids and other lipids. This protein localizes to the endoplasmic reticulum. In rodents, the homologous protein has been shown to metabolize certain carcinogens, however, the specific function of the human protein has not

Target Details

been determined.

Gene ID: 74134

NCBI Accession: [NP_083051](#)

UniProt: [Q9DBX6](#)

Application Details

Application Notes: IHC/IF (M,R) 1:500-1:1000

Restrictions: For Research Use only

Handling

Format: Liquid

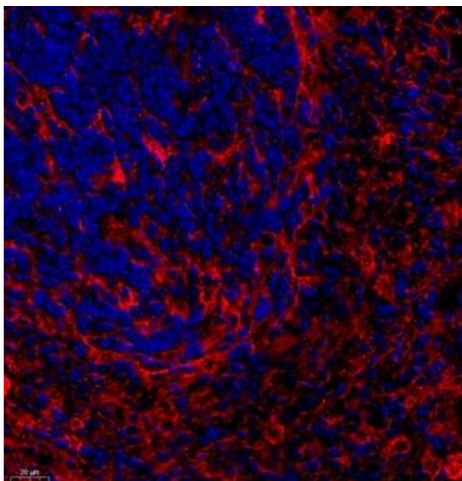
Buffer: PBS, pH 7.4, 0.02 % sodium azide

Preservative: Sodium azide

Precaution of Use: This product contains Sodium azide: a POISONOUS AND HAZARDOUS SUBSTANCE which should be handled by trained staff only.

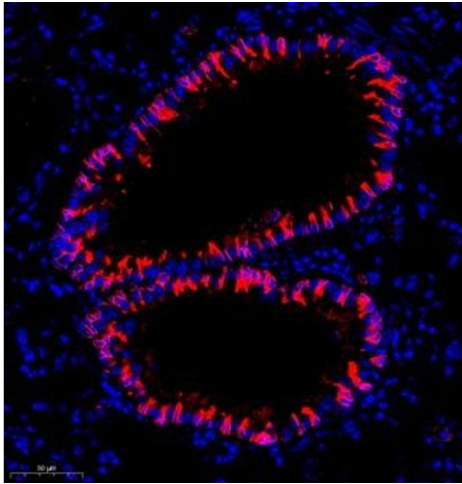
Storage: -20 °C

Images



Immunofluorescence (Paraffin-embedded Sections)

Image 1. Immunofluorescence of paraffin embedded rat spleen using CYP2S1 (ABIN7073673) at dilution of 1:600 (400x lens)



Immunofluorescence (Paraffin-embedded Sections)

Image 2. Immunofluorescence of paraffin embedded mouse lung using CYP2S1 (ABIN7073673) at dilution of 1:600 (300x lens)