



Datasheet for ABIN7073689
anti-DCHS1 antibody



[Go to Product page](#)

1 Image

Overview

Quantity:	100 µL
Target:	DCHS1
Reactivity:	Human, Mouse, Rat
Host:	Rabbit
Clonality:	Polyclonal
Conjugate:	This DCHS1 antibody is un-conjugated
Application:	Western Blotting (WB)

Product Details

Immunogen:	Recombinant protein corresponding to Mouse DCHS1
Cross-Reactivity:	Human, Rat
Purification:	Affinity purification

Target Details

Target:	DCHS1
Alternative Name:	DCHS1 (DCHS1 Products)
Background:	Calcium-dependent cell-adhesion protein. Mediates functions in neuroprogenitor cell proliferation and differentiation. In the heart, has a critical role for proper morphogenesis of the mitral valve, acting in the regulation of cell migration involved in valve formation.
Molecular Weight:	50 kDa

Target Details

Gene ID: 233651

NCBI Accession: [NP_001156415](#)

UniProt: [E9PVD3](#)

Application Details

Application Notes: WB (H,M,R) 1:300-1:800

Restrictions: For Research Use only

Handling

Format: Liquid

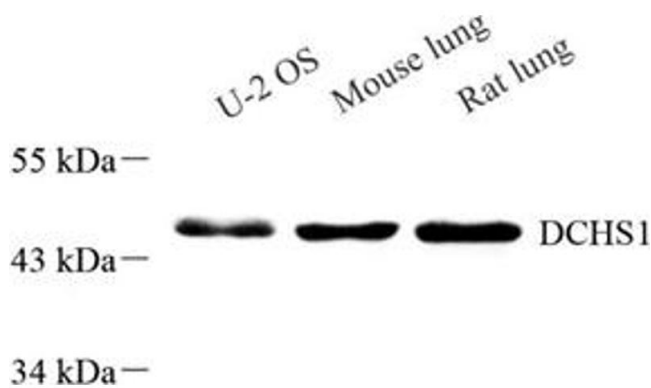
Buffer: PBS, pH 7.4, 0.02 % sodium azide

Preservative: Sodium azide

Precaution of Use: This product contains Sodium azide: a POISONOUS AND HAZARDOUS SUBSTANCE which should be handled by trained staff only.

Storage: -20 °C

Images



Western Blotting

Image 1. Western blot analysis of DCHS1 (ABIN7073689), at dilution of 1: 800