

Datasheet for ABIN7073694

anti-DDX19B antibody

10 Images

[Go to Product page](#)

Overview

Quantity:	100 µL
Target:	DDX19B
Reactivity:	Human, Mouse, Rat
Host:	Rabbit
Clonality:	Polyclonal
Conjugate:	This DDX19B antibody is un-conjugated
Application:	Western Blotting (WB), Immunohistochemistry (IHC), Immunofluorescence (IF)

Product Details

Immunogen:	KLH conjugated Synthetic peptide corresponding to Human DDX19B
Cross-Reactivity:	Mouse, Rat
Purification:	Affinity purification

Target Details

Target:	DDX19B
Alternative Name:	DDX19B (DDX19B Products)
Background:	DEAD box proteins, characterized by the conserved motif Asp-Glu-Ala-Asp (DEAD), are putative RNA helicases. They are implicated in a number of cellular processes involving alteration of RNA secondary structure such as translation initiation, nuclear and mitochondrial splicing, and ribosome and spliceosome assembly. This gene encodes a DEAD box protein, which exhibits RNA-dependent ATPase and ATP-dependent RNA-unwinding activities. This protein is recruited

Target Details

to the cytoplasmic fibrils of the nuclear pore complex, where it participates in the export of mRNA from the nucleus. Multiple alternatively spliced transcript variants encoding different isoforms have been found for this gene.

Molecular Weight:	70 kDa
Gene ID:	11269
NCBI Accession:	NP_001014449
UniProt:	Q9UMR2

Application Details

Application Notes:	WB (H,M) 1:800-1:1600, IHC/IF (H,M,R) 1:1000-1:4000/1:650-1:1300
Restrictions:	For Research Use only

Handling

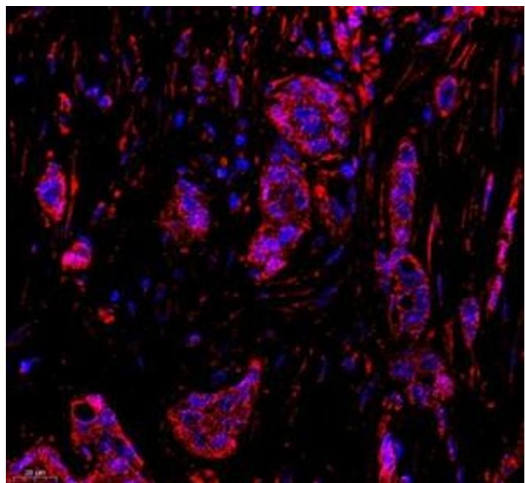
Format:	Liquid
Buffer:	PBS, pH 7.4, 0.02 % sodium azide
Preservative:	Sodium azide
Precaution of Use:	This product contains Sodium azide: a POISONOUS AND HAZARDOUS SUBSTANCE which should be handled by trained staff only.
Storage:	-20 °C

Images

Western Blotting

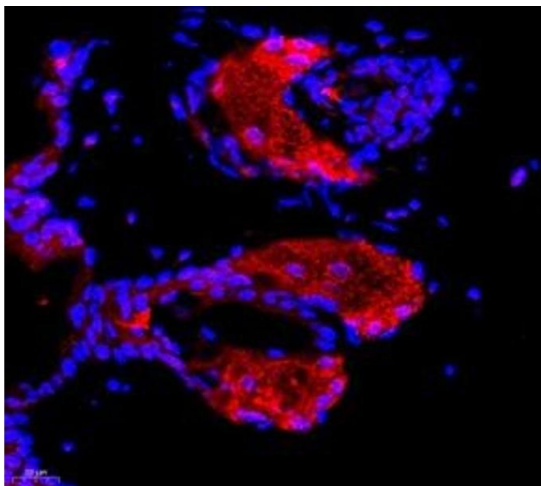
Image 1. Western blot analysis of DDX19B (ABIN7073694) at dilution of 1: 800





Immunofluorescence (Paraffin-embedded Sections)

Image 2. Immunofluorescence of paraffin embedded human breast cancer using DDX19B (ABIN7073694) at dilution of 1: 650 (400x lens)



Immunofluorescence (Paraffin-embedded Sections)

Image 3. Immunofluorescence of paraffin embedded mouse breast using DDX19B (ABIN7073694) at dilution of 1: 650 (400x lens)

Please check the [product details page](#) for more images. Overall 10 images are available for ABIN7073694.