



[Go to Product page](#)

Datasheet for ABIN7073775
anti-DUSP16 antibody

2 Images

Overview

Quantity:	100 µL
Target:	DUSP16
Reactivity:	Human, Mouse, Rat
Host:	Rabbit
Clonality:	Polyclonal
Conjugate:	This DUSP16 antibody is un-conjugated
Application:	Western Blotting (WB)

Product Details

Immunogen:	KLH conjugated Synthetic peptide corresponding to Human DUSP16
Cross-Reactivity:	Mouse, Rat
Purification:	Affinity purification

Target Details

Target:	DUSP16
Alternative Name:	DUSP16 (DUSP16 Products)
Background:	This gene encodes a mitogen-activated protein kinase phosphatase that is a member of the dual specificity protein phosphatase subfamily. These phosphatases inactivate their target kinases by dephosphorylating both the phosphoserine/threonine and phosphotyrosine residues. The encoded protein specifically regulates the c-Jun amino-terminal kinase (JNK) and extracellular signal-regulated kinase (ERK) pathways.

Target Details

Molecular Weight:	73 kDa
Gene ID:	80824
NCBI Accession:	NP_085143
UniProt:	Q9BY84

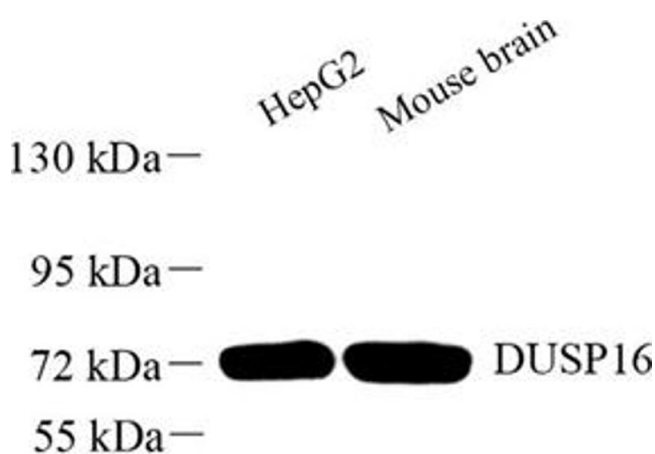
Application Details

Application Notes:	WB (H,M,R) 1:1000-1:2000
Restrictions:	For Research Use only

Handling

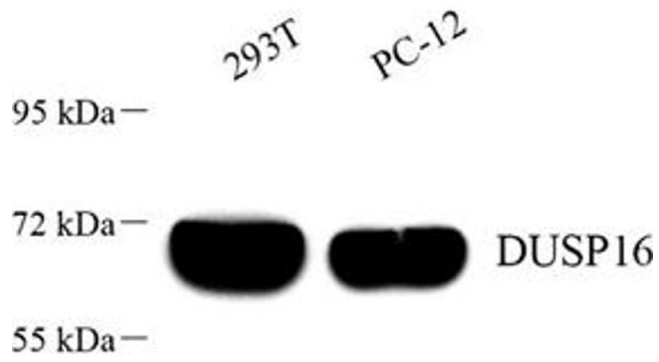
Format:	Liquid
Buffer:	PBS, pH 7.4, 0.02 % sodium azide
Preservative:	Sodium azide
Precaution of Use:	This product contains Sodium azide: a POISONOUS AND HAZARDOUS SUBSTANCE which should be handled by trained staff only.
Storage:	-20 °C

Images



Western Blotting

Image 1. Western blot analysis of DUSP16 (ABIN7073775) at dilution of 1: 1000



Western Blotting

Image 2. Western blot analysis of DUSP16 (ABIN7073775) at dilution of 1: 1000