

Datasheet for ABIN7073795

anti-EEA1 antibody[Go to Product page](#)**1** Image

Overview

Quantity:	100 µL
Target:	EEA1
Reactivity:	Mouse, Rat
Host:	Rabbit
Clonality:	Polyclonal
Conjugate:	This EEA1 antibody is un-conjugated
Application:	Immunohistochemistry (IHC), Immunofluorescence (IF)

Product Details

Immunogen:	Recombinant protein corresponding to Mouse EEA1
Cross-Reactivity:	Rat
Purification:	Affinity purification

Target Details

Target:	EEA1
Alternative Name:	EEA1 (EEA1 Products)
Background:	Early endosomes are cytoplasmic compartments that function in receiving and sorting endocytosed proteins for vesicular transport. EEA1 (early endosome antigen 1) is a peripheral membrane protein that co-localizes with the transferrin receptor and Rab5 on early endosomes. EEA1 contains a calmodulin-binding IQ motif and cysteine rich finger motif necessary for its specific localization to the early endosomes. EEA1 has sequence homology to several yeast

Target Details

proteins that have been implicated in membrane trafficking, including Vps27, Fab1 and Vac1. Evidence suggests a possible role for EEA1 in mediating the regulatory effects of 3'-phosphoinositides on membrane trafficking.

Gene ID: 216238

NCBI Accession: [NP_001001932](#)

UniProt: [Q8BL66](#)

Pathways: [Toll-Like Receptors Cascades](#)

Application Details

Application Notes: IHC/IF (M,R) 1:2000-1:5000/1:1000-1:1500

Restrictions: For Research Use only

Handling

Format: Liquid

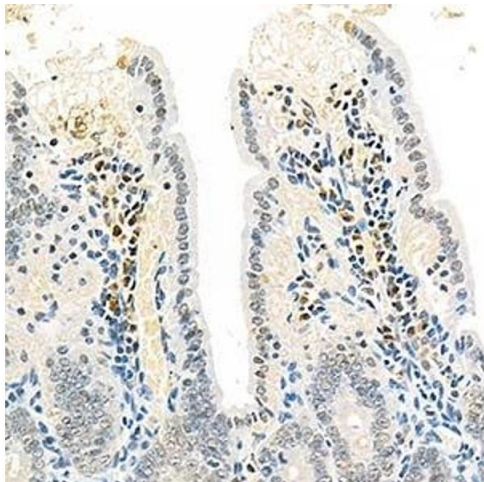
Buffer: PBS, pH 7.4, 0.02 % sodium azide

Preservative: Sodium azide

Precaution of Use: This product contains Sodium azide: a POISONOUS AND HAZARDOUS SUBSTANCE which should be handled by trained staff only.

Storage: -20 °C

Images



Immunohistochemistry (Paraffin-embedded Sections)

Image 1. Immunohistochemistry analysis of paraffin-embedded mouse colon using EEA1 (ABIN7073795) at dilution of 1: 2500