



[Go to Product page](#)

Datasheet for ABIN7073800  
**anti-ENTPD5 antibody**

1 Image

### Overview

Quantity:	100 µL
Target:	ENTPD5
Reactivity:	Mouse, Rat
Host:	Rabbit
Clonality:	Polyclonal
Application:	Immunohistochemistry (IHC), Immunofluorescence (IF)

### Product Details

Immunogen:	Recombinant protein corresponding to Mouse ENTPD5
Cross-Reactivity:	Rat
Purification:	Affinity purification

### Target Details

Target:	ENTPD5
Alternative Name:	ENTPD5 ( <a href="#">ENTPD5 Products</a> )
Background:	The protein encoded by this gene is similar to E-type nucleotidases (NTPases)/ecto-ATPase/apyrases. NTPases, such as CD39, mediate catabolism of extracellular nucleotides. ENTPD5 contains 4 apyrase-conserved regions which is characteristic of NTPases.
Gene ID:	12499
NCBI Accession:	<a href="#">NP_001021385</a>

## Target Details

---

UniProt: [Q9WUZ9](#)

## Application Details

---

Application Notes: IHC/IF (M,R) 1:650-1:1300

Restrictions: For Research Use only

## Handling

---

Format: Liquid

Buffer: PBS, pH 7.4, 0.02 % sodium azide

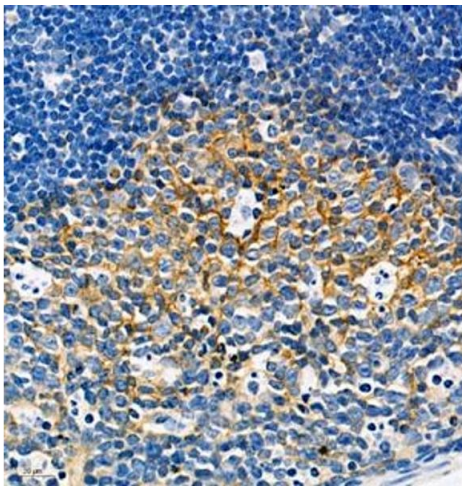
Preservative: Sodium azide

Precaution of Use: This product contains Sodium azide: a POISONOUS AND HAZARDOUS SUBSTANCE which should be handled by trained staff only.

Storage: -20 °C

## Images

---



### Immunohistochemistry (Paraffin-embedded Sections)

**Image 1.** Immunohistochemistry of paraffin embedded mouse lymph node using CD39L4 (ABIN7073800) at dilution of 1:650 (460x lens)