

Datasheet for ABIN7073820

**anti-NEIL1 antibody**

8 Images

[Go to Product page](#)

## Overview

Quantity:	100 µL
Target:	NEIL1
Reactivity:	Human, Rat, Mouse
Host:	Rabbit
Clonality:	Polyclonal
Conjugate:	This NEIL1 antibody is un-conjugated
Application:	Western Blotting (WB), Immunohistochemistry (IHC), Immunofluorescence (IF)

## Product Details

Immunogen:	KLH conjugated Synthetic peptide corresponding to Mouse NEIL1
Cross-Reactivity:	Human, Rat
Purification:	Affinity purification

## Target Details

Target:	NEIL1
Alternative Name:	NEIL1 ( <a href="#">NEIL1 Products</a> )
Background:	NEIL1, also named as NEH1 and FPG1, belongs to the FPG family. It is involved in base excision repair of DNA damaged by oxidation or by mutagenic agents. NEIL1 acts as DNA glycosylase that recognizes and removes damaged bases. It has a preference for oxidized pyrimidines, such as thymine glycol, formamidopyrimidine (Fapy) and 5-hydroxyuracil. NEIL1 has marginal activity towards 8-oxoguanine. It has AP (apurinic/aprimidinic) lyase activity and introduces

### Target Details

	nicks in the DNA strand.
Molecular Weight:	44 kDa
Gene ID:	72774
NCBI Accession:	<a href="#">NP_082623</a>
UniProt:	<a href="#">Q8K4Q6</a>
Pathways:	<a href="#">DNA Damage Repair</a>

### Application Details

Application Notes:	WB (M,R) 1:800-1:1600, IHC/IF (H,M,R) 1:1200-1:3000/1:300-1:600
Restrictions:	For Research Use only

### Handling

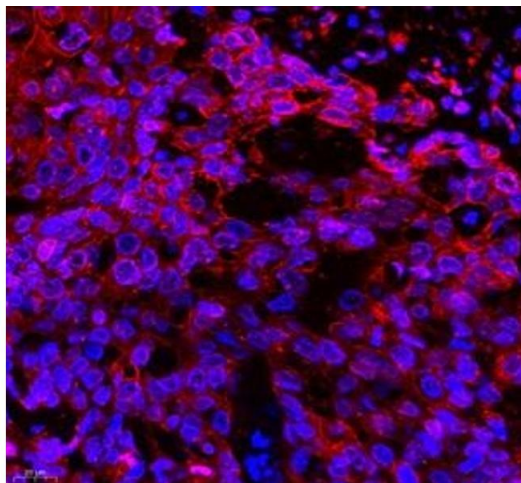
Format:	Liquid
Buffer:	PBS, pH 7.4, 0.02 % sodium azide
Preservative:	Sodium azide
Precaution of Use:	This product contains Sodium azide: a POISONOUS AND HAZARDOUS SUBSTANCE which should be handled by trained staff only.
Storage:	-20 °C

### Images



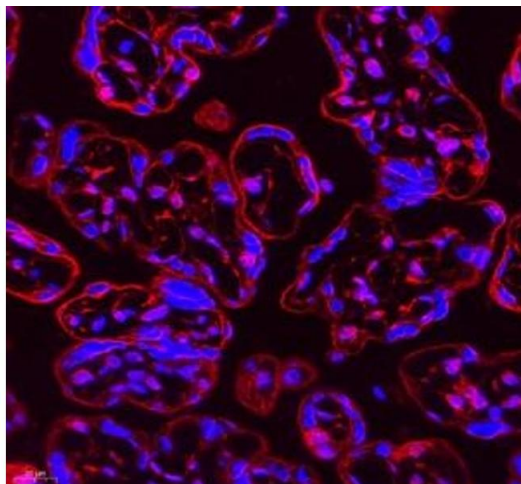
#### Western Blotting

**Image 1.** Western blot analysis of Neil1 (ABIN7073820) at dilution of 1: 800



#### Immunofluorescence (Paraffin-embedded Sections)

**Image 2.** Immunofluorescence of paraffin embedded human esophagus cancer using Neil1 (ABIN7073820) at dilution of 1: 300 (400x lens)



#### Immunofluorescence (Paraffin-embedded Sections)

**Image 3.** Immunofluorescence of paraffin embedded human placenta using Neil1 (ABIN7073820) at dilution of 1: 300 (400x lens)

Please check the [product details page](#) for more images. Overall 8 images are available for ABIN7073820.