



[Go to Product page](#)

Datasheet for ABIN7073822
anti-ELAPOR1 antibody

4 Images

Overview

Quantity:	100 µL
Target:	ELAPOR1
Reactivity:	Human, Mouse
Host:	Rabbit
Clonality:	Polyclonal
Conjugate:	This ELAPOR1 antibody is un-conjugated
Application:	Immunohistochemistry (IHC), Immunofluorescence (IF)

Product Details

Immunogen:	Recombinant protein corresponding to Mouse Estrogen-induced gene 121 protein
Cross-Reactivity:	Human
Purification:	Affinity purification

Target Details

Target:	ELAPOR1
Alternative Name:	Estrogen-induced gene 121 protein (ELAPOR1 Products)
Background:	May protect cells from cell death by inducing cytosolic vacuolization and upregulating the autophagy pathway. May play a role in apoptosis and cell proliferation through its interaction with HSPA5.
Gene ID:	229722

Target Details

NCBI Accession: [NP_001028476](#)

UniProt: [A2AFS3](#)

Application Details

Application Notes: IHC/IF (H,M) 1:2500-1:10000

Restrictions: For Research Use only

Handling

Format: Liquid

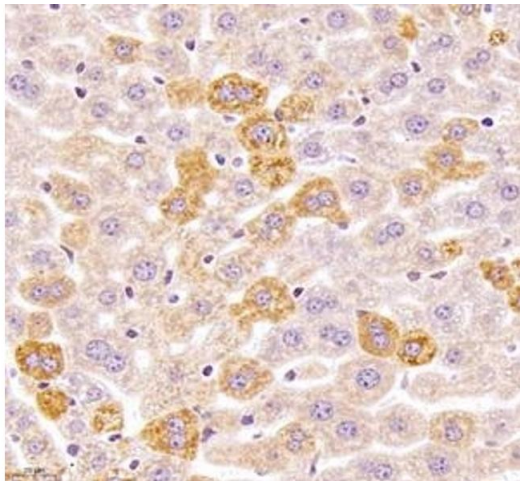
Buffer: PBS, pH 7.4, 0.02 % sodium azide

Preservative: Sodium azide

Precaution of Use: This product contains Sodium azide: a POISONOUS AND HAZARDOUS SUBSTANCE which should be handled by trained staff only.

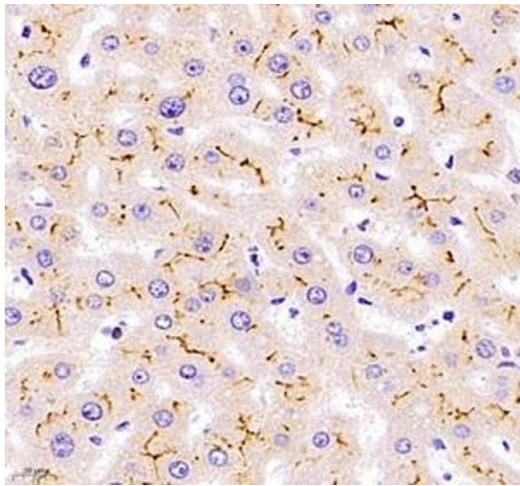
Storage: -20 °C

Images



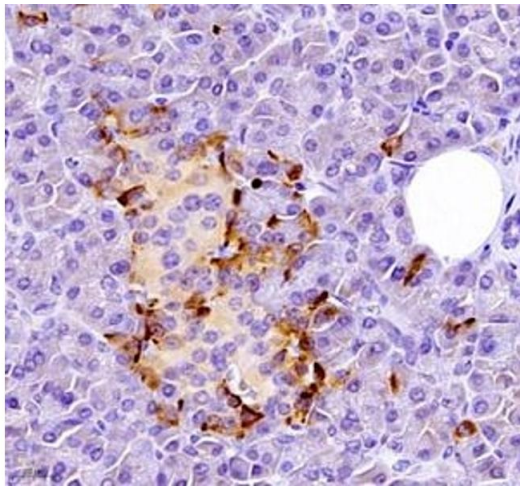
Immunohistochemistry (Paraffin-embedded Sections)

Image 1. Immunohistochemistry of paraffin embedded mouse liver using Kiaa1324 (ABIN7073822) at dilution of 1:2500 (400x lens)



Immunohistochemistry (Paraffin-embedded Sections)

Image 2. Immunohistochemistry of paraffin embedded human liver using Kiaa1324 (ABIN7073822) at dilution of 1:2500 (400x lens)



Immunohistochemistry (Paraffin-embedded Sections)

Image 3. Immunohistochemistry of paraffin embedded human pancreas using Kiaa1324 (ABIN7073822) at dilution of 1:2500 (400x lens)

Please check the [product details page](#) for more images. Overall 4 images are available for ABIN7073822.