



[Go to Product page](#)

Datasheet for ABIN7073829

anti-eGFP antibody

2 Images

Overview

Quantity:	100 µL
Target:	eGFP
Reactivity:	Tag
Host:	Rabbit
Clonality:	Polyclonal
Conjugate:	This eGFP antibody is un-conjugated
Application:	Western Blotting (WB), Immunohistochemistry (IHC), Immunofluorescence (IF)

Product Details

Immunogen:	KLH conjugated Synthetic peptide corresponding to Mouse eGFP
Purification:	Affinity purification

Target Details

Target:	eGFP
Alternative Name:	EGFP (eGFP Products)
Background:	Enhanced green fluorescence protein (eGFP) is a 27 kDa protein derived from the jellyfish <i>Aequorea victoria</i> , which emits green light (emission peak at a wavelength of 509 nm) when excited by blue light (excitation peak at a wavelength of 395 nm). eGFP has become an invaluable tool in cell biology research, since its intrinsic fluorescence can be visualized in living cells. eGFP has been widely used as a reporter for gene expression, enabling researchers to visualize and localize eGFP-tagged proteins within living cells without the need for chemical

Target Details

staining. Other applications of eGFP include assessment of protein protein interactions through the yeast two hybrid system and measurement of distance between proteins through fluorescence energy transfer (FRET) protocols.

Molecular Weight: 29 kDa

Application Details

Application Notes: WB (Tag) 1:500-1:1000, IHC/IF (/) 1: 500-1: 1000

Restrictions: For Research Use only

Handling

Format: Liquid

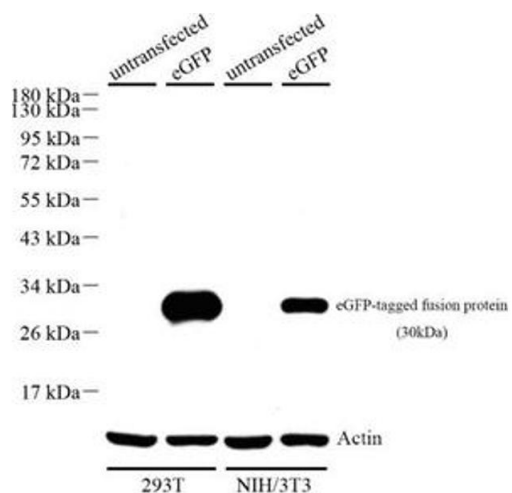
Buffer: PBS, pH 7.4, 0.02 % sodium azide

Preservative: Sodium azide

Precaution of Use: This product contains Sodium azide: a POISONOUS AND HAZARDOUS SUBSTANCE which should be handled by trained staff only.

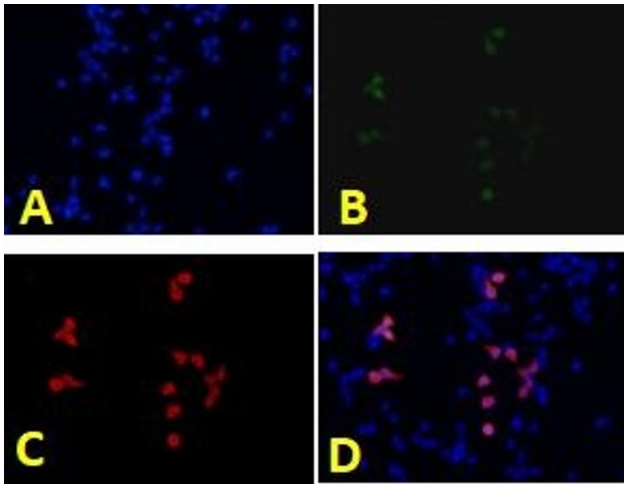
Storage: -20 °C

Images



Western Blotting

Image 1. Western blot analysis of eGFP (ABIN7073829), at dilution of 1: 500, Lane 1: 293T cell lysate, Lane 2: 293T with eGFP cell lysate, Lane 3: NIH/3T3 cell lysate, Lane 4: NIH/3T3 with eGFP cell lysate



Immunofluorescence

Image 2. Immunofluorescence analysis of human 293T cells using eGFP (ABIN7073829) at dilution of 1: 1000,A: DAPI nuclear stain (blue),B: eGFP protein (green),C: Anti-eGFP (red),D: Merged