



Datasheet for ABIN7073880

anti-EIF2S2 antibody



[Go to Product page](#)

6 Images

Overview

Quantity:	100 µL
Target:	EIF2S2
Reactivity:	Human, Mouse, Rat
Host:	Rabbit
Clonality:	Polyclonal
Conjugate:	This EIF2S2 antibody is un-conjugated
Application:	Western Blotting (WB), Immunohistochemistry (IHC), Immunofluorescence (IF)

Product Details

Immunogen:	Recombinant protein corresponding to Mouse EIF2S2
Cross-Reactivity:	Human, Rat
Purification:	Affinity purification

Target Details

Target:	EIF2S2
Alternative Name:	EIF2S2/EIF2B (EIF2S2 Products)
Background:	Eukaryotic translation initiation factor 2 (eIF2) is composed of three subunits, eIF2 alpha, eIF2 beta (EIF2S2), and eIF2 gamma, which are present in equal molar amounts. eIF2 beta plays a central role in the maintenance of what is generally considered a rate-limiting step in mRNA translation. In the early steps of protein synthesis, eIF2 beta binds GTP and Met-tRNA and transfers Met-tRNA to the 40S ribosomal subunit. At the end of the initiation process, GTP

Target Details

bound to eIF2 beta is hydrolyzed to GDP and the eIF2/GDP complex is released from the ribosome.

Molecular Weight: 50 kDa

Gene ID: 67204

NCBI Accession: [NP_080306](#)

UniProt: [Q99L45](#)

Application Details

Application Notes: WB (H,M,R) 1:500-1:1000, IHC/IF (H,M,R) 1:1000-1:2000/1:500-1:3000

Restrictions: For Research Use only

Handling

Format: Liquid

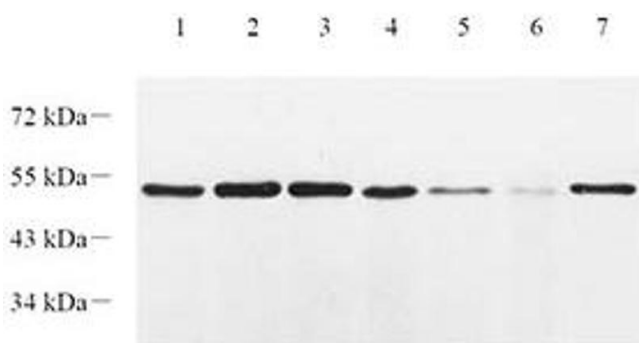
Buffer: PBS, pH 7.4, 0.02 % sodium azide

Preservative: Sodium azide

Precaution of Use: This product contains Sodium azide: a POISONOUS AND HAZARDOUS SUBSTANCE which should be handled by trained staff only.

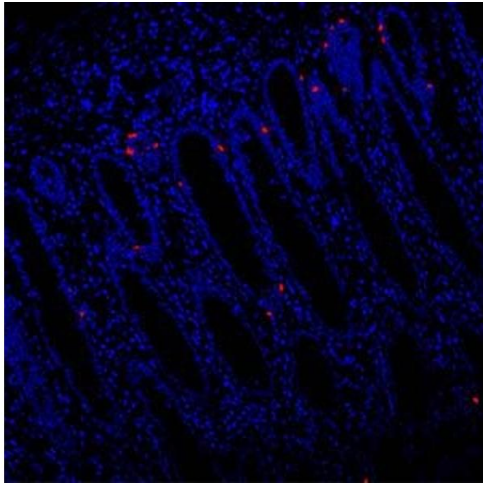
Storage: -20 °C

Images



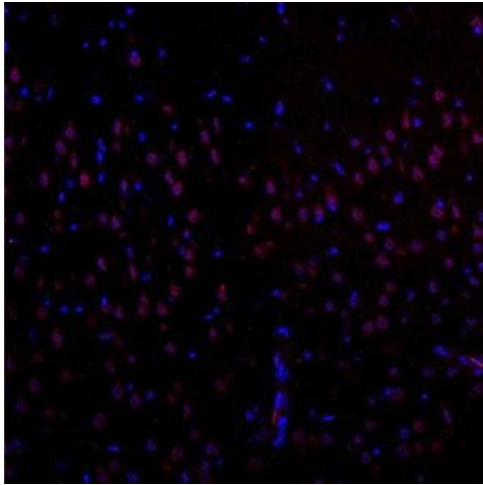
Western Blotting

Image 1. Western blot analysis of EIF2S2 (ABIN7073880) at dilution of 1: 1000, Lane 1: HT29 cell lysate, Lane 2: L1299 cell lysate, Lane 3: CaCO2 cell lysate, Lane 4: Mouse lung tissue lysate, Lane 5: Mouse colon tissue lysate, Lane 6: Mouse small intestine tissue lysate, Lane 7: Rat lung tissue lysate



Immunofluorescence (Paraffin-embedded Sections)

Image 2. Immunofluorescent analysis of paraffin-embedded human colon using EIF2S2 (ABIN7073880) at dilution of 1: 1000



Immunofluorescence (Paraffin-embedded Sections)

Image 3. Immunofluorescent analysis of paraffin-embedded rat brain using EIF2S2 (ABIN7073880) at dilution of 1: 1000

Please check the [product details page](#) for more images. Overall 6 images are available for ABIN7073880.