

Datasheet for ABIN7073893

anti-EIF5A2 antibody**4** Images[Go to Product page](#)

Overview

Quantity:	100 µL
Target:	EIF5A2
Reactivity:	Mouse, Rat
Host:	Rabbit
Clonality:	Polyclonal
Conjugate:	This EIF5A2 antibody is un-conjugated
Application:	Immunohistochemistry (IHC), Immunofluorescence (IF)

Product Details

Immunogen:	KLH conjugated Synthetic peptide corresponding to Mouse eIF5A2
Cross-Reactivity:	Rat
Purification:	Affinity purification

Target Details

Target:	EIF5A2
Alternative Name:	eIF5A2 (EIF5A2 Products)
Background:	<p>This gene has an important function at the level of mRNA turnover, mRNA-binding protein involved in translation elongation. probably acting downstream of decapping. Involved in actin dynamics and cell cycle progression, mRNA decay and probably in a pathway involved in stress response and maintenance of cell wall integrity. Functions as a regulator of apoptosis.</p> <p>Mediates effects of polyamines on neuronal process extension and survival. May play an</p>

Target Details

important role in brain development and function, and in skeletal muscle stem cell differentiation.

Gene ID: 208691

NCBI Accession: [NP_808254](#)

UniProt: [Q8BGY2](#)

Application Details

Application Notes: IHC/IF (M,R) 1:250-1:1200/1:300-1:1200

Restrictions: For Research Use only

Handling

Format: Liquid

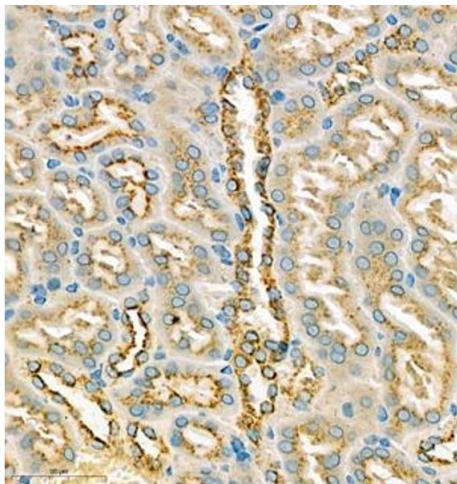
Buffer: PBS, pH 7.4, 0.02 % sodium azide

Preservative: Sodium azide

Precaution of Use: This product contains Sodium azide: a POISONOUS AND HAZARDOUS SUBSTANCE which should be handled by trained staff only.

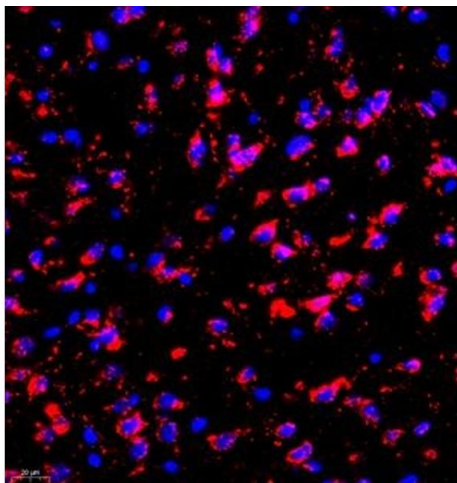
Storage: -20 °C

Images



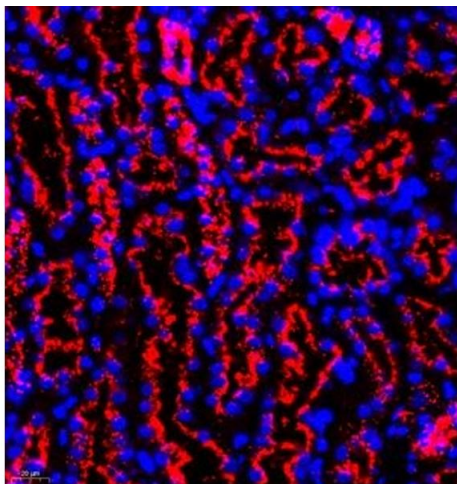
Immunohistochemistry (Paraffin-embedded Sections)

Image 1. Immunohistochemistry of paraffin embedded mouse kidney using eIF5A2 (ABIN7073893) at dilution of 1:250 (400x lens)



Immunofluorescence (Paraffin-embedded Sections)

Image 2. Immunofluorescence of paraffin embedded mouse brain using eIF5A2 (ABIN7073893) at dilution of 1:300 (400x lens)



Immunofluorescence (Paraffin-embedded Sections)

Image 3. Immunofluorescence of paraffin embedded mouse kidney using eIF5A2 (ABIN7073893) at dilution of 1:300 (400x lens)

Please check the [product details page](#) for more images. Overall 4 images are available for ABIN7073893.