



[Go to Product page](#)

Datasheet for ABIN7073909  
**anti-FAM117B antibody**

5 Images

### Overview

Quantity:	100 µL
Target:	FAM117B
Reactivity:	Mouse, Rat
Host:	Rabbit
Clonality:	Polyclonal
Conjugate:	This FAM117B antibody is un-conjugated
Application:	Immunofluorescence (IF), Immunohistochemistry (IHC)

### Product Details

Immunogen:	Recombinant protein corresponding to Mouse ALS2CR13
Cross-Reactivity:	Rat
Purification:	Affinity purification

### Target Details

Target:	FAM117B
Alternative Name:	ALS2CR13 ( <a href="#">FAM117B Products</a> )
Background:	FAM117B, also named as ALS2CR13, is mapped in the genomic region covering the complete candidate region for Amyotrophic lateral sclerosis 2 (ALS2). This antibody is specific to FAM117B.
Gene ID:	72750

## Target Details

---

NCBI Accession: [NP\\_001032814](#)

UniProt: [Q3U3E2](#)

## Application Details

---

Application Notes: IHC/IF (M,R) 1:2000-1:4000/1:600-1:2000

Restrictions: For Research Use only

## Handling

---

Format: Liquid

Buffer: PBS, pH 7.4, 0.02 % sodium azide

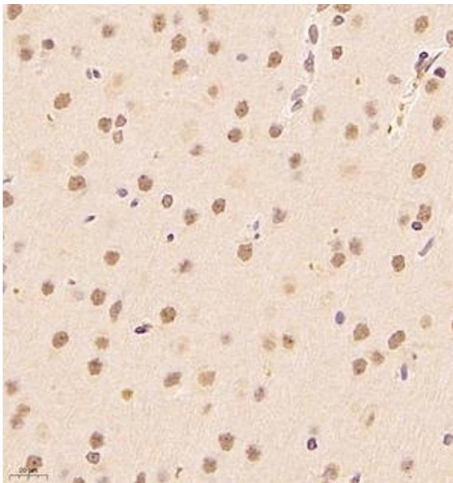
Preservative: Sodium azide

Precaution of Use: This product contains Sodium azide: a POISONOUS AND HAZARDOUS SUBSTANCE which should be handled by trained staff only.

Storage: -20 °C

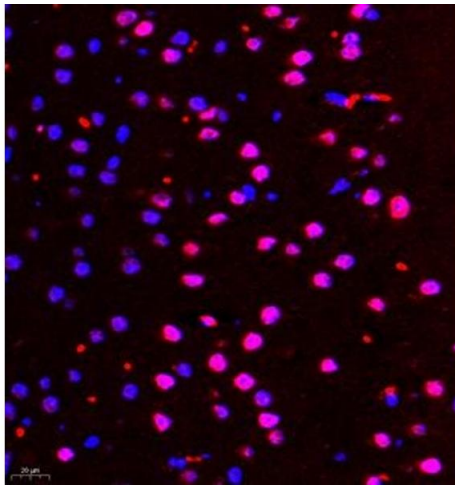
## Images

---



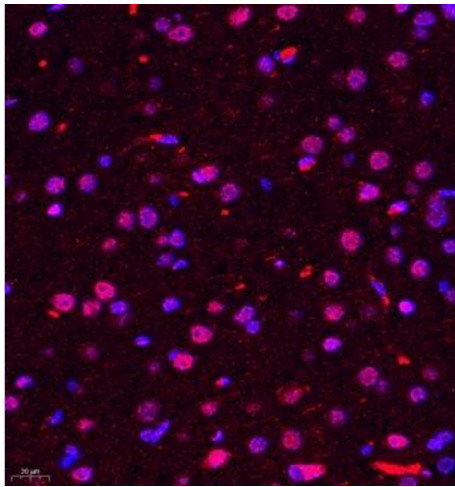
### Immunohistochemistry (Paraffin-embedded Sections)

**Image 1.** Immunohistochemistry of paraffin embedded rat brain using ALS2CR13 (ABIN7073909) at dilution of 1:1800 (400x lens)



#### Immunofluorescence (Paraffin-embedded Sections)

**Image 2.** Immunofluorescence of paraffin embedded mouse brain using ALS2CR13 (ABIN7073909) at dilution of 1:650 (400x lens)



#### Immunofluorescence (Paraffin-embedded Sections)

**Image 3.** Immunofluorescence of paraffin embedded rat brain using ALS2CR13 (ABIN7073909) at dilution of 1:650 (400x lens)

Please check the [product details page](#) for more images. Overall 5 images are available for ABIN7073909.